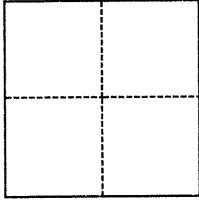


CORNER RECORD

Agency Index BK 129 PG 67
Document Number CR-13361

City of EDEN TOWNSHIP County of ALAMEDA, California
Brief Legal Description Standard County concrete monument on Via Marlin easterly of Via Granada.

CORNER TYPE



- ☐ Government Corner ☒ Control
☐ Meander ☐ Property
☐ Rancho ☐ Other

Date of Survey August 19, 2019

COORDINATES (Optional)

N. _____ E. _____
Elevation _____
Units ☐ Metric ☐ U.S. Survey Foot
Horizontal Datum _____
Zone _____ Epoch Date _____
Vertical Datum _____
☐ Complies with Public Resources Code §§8801-8819
☐ Complies with Public Resources Code §§8890-8902

PLS Act Ref.: ☐ 8765(d) ☒ 8771 ☐ 8773 ☐ Other:
Corner/Monument: ☒ Left as found ☐ Established ☐ Rebuilt ☒ Pre-Construction
☐ Found and tagged ☐ Reestablished ☒ Referenced ☐ Post-Construction

Narrative of corner identified and monument as found, set, reset, replaced, or removed:

☒ See sheet #2 for description(s):

Found standard Alameda County monument in well on Via Marlin the third easterly of Via Granada, per Tract Map 1025, 30 M 87, and referenced as shown on page 2.

SURVEYOR'S STATEMENT

This Corner Record was prepared by me or under my direction in conformance with

the Professional Land Surveyors' Act on November 19, 2019

Signed [Signature] P.L.S. or P.C.E. No. 7905



COUNTY SURVEYOR'S STATEMENT

DEC 09 2019

This Corner Record was received _____

and examined and filed DEC 10 2019

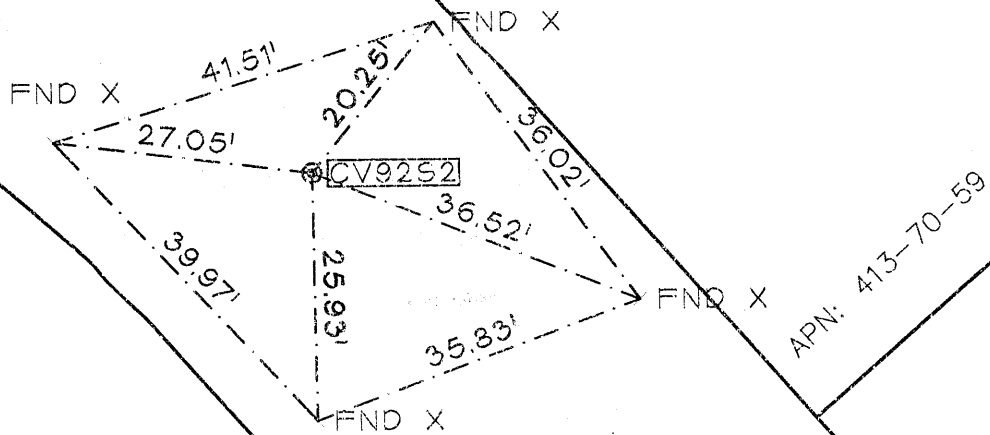
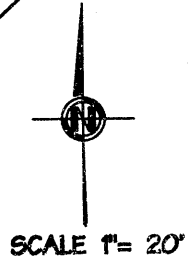
Signed D. Ian Wilson P.L.S. or P.C.E. No. 7010

Title **ALAMEDA COUNTY SURVEYOR**

County Surveyor's Comment

SPEC-2378



**REFERENCES:**

TRACT MAP 1025 - 30 MAPS 87
CR - 2357

LEGEND:

FOUND STANDARD ALAMEDA
COUNTY CONCRETE MONUMENT
IN WELL (C)
SET STAINLESS STEEL TAG
L.S. 7905 WITH MAG NAIL (C)
FOUND "X" AS NOTED
AA#FA# Ala. Co. MON ID

ALS JOB 2018-043