

BASIS OF BEARINGS

THE BEARING OF N 73° 33' 46" W ALONG THE EASTERLY LINE OF LANDS OF P. & G. E. COMPANY AS SHOWN ON THAT CERTAIN RECORD OF SURVEY, SHEET 4 OF 4 SHEETS, FILED FOR RECORD IN BK. 157 OF MAPS AT PAGES 25, 26, 27 & 28, SANTA CLARA COUNTY RECORDS, WAS TAKEN AS THE BASIS OF BEARINGS SHOWN HEREON.

LEGEND ~ NOTES

- INDICATES 1" IRON PIPE FOUND UNLESS NOTED OTHERWISE
- ◎ INDICATES STANDARD CITY MONUMENT FOUND
- ◎ INDICATES STANDARD CITY MONUMENT SET
- Δ INDICATES ANGLE POINT
- P.S.E. = PUBLIC SERVICE EASEMENT
- T.E. = TREE EASEMENT
- B.S.L. = BUILDING SETBACK LINE (SEE ZONING ORDINANCE FOR ALL SETBACK REQUIREMENTS)
- P.S.D.E. = PRIVATE STORM DRAINAGE EASEMENT

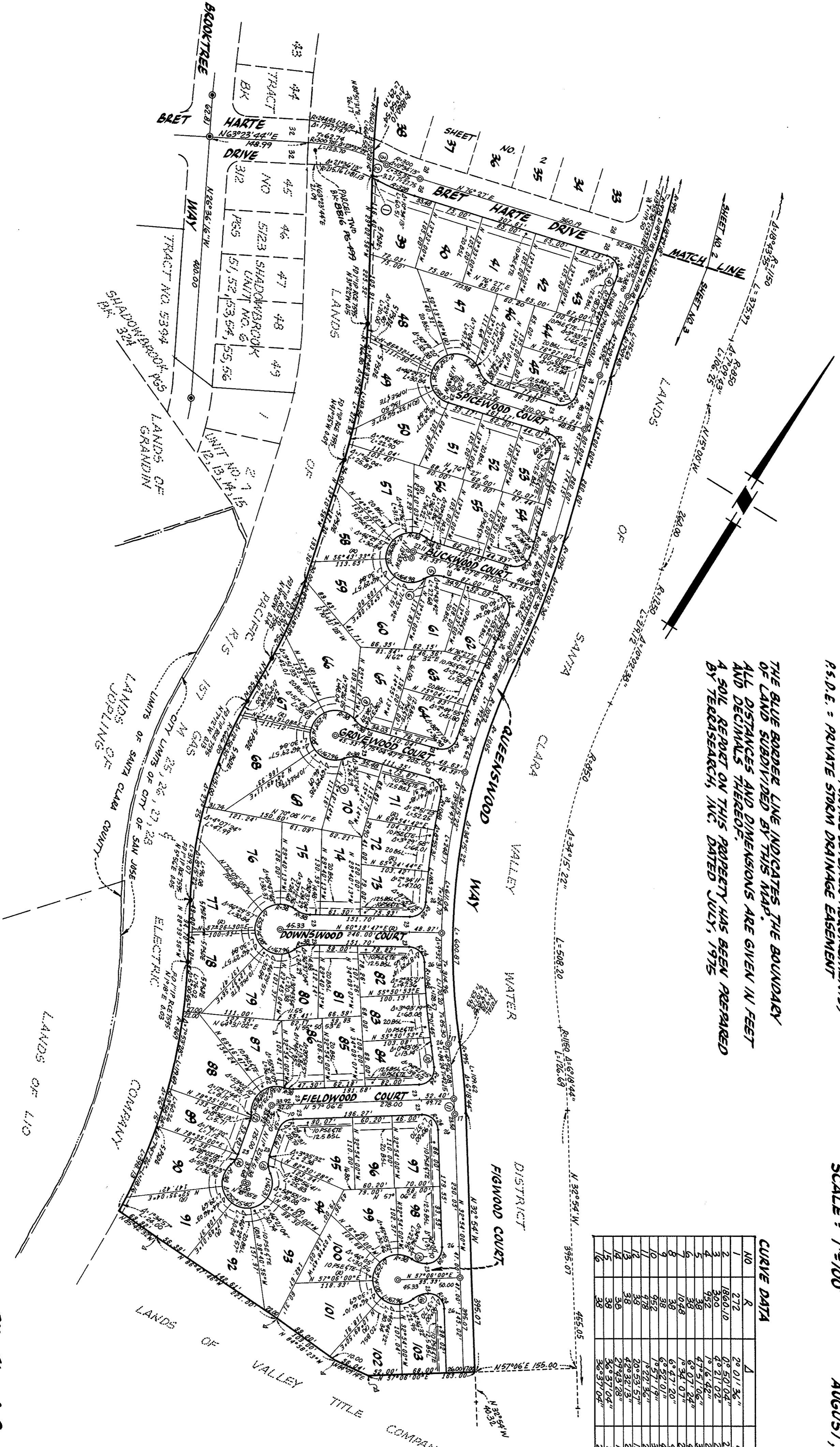
THE BLUE BORDER LINE INDICATES THE BOUNDARY OF LAND SUBDIVIDED BY THIS MAP. ALL DISTANCES AND DIMENSIONS ARE GIVEN IN FEET AND DECIMALS THEREOF. A SOIL REPORT ON THIS PROPERTY HAS BEEN PREPARED BY TERRASARCH, INC. DATED JULY, 1975

TRACT NO. 5740

CONSISTING OF THREE SHEETS BEING A PORTION OF THE RANCHOS SAN VICENTE AND DE LOS CAPITANCILLOS AND LYING WITHIN THE CITY OF SAN JOSE CALIFORNIA
SCALE : 1" = 100'
AUGUST, 1975

CURVE DATA

NO	R	Δ	L	T
1	272	22° 01' 36"	9.62	
2	1860.10	0° 50' 04"	2.09	
3	309	4° 21' 02"	2.78	11.40
4	952	1° 16' 42"	2.14	
5	38	47° 51' 06"	3.14	
6	1048	6° 07' 24"	28.69	
7	38	6° 47' 20"	4.50	
8	38	6° 47' 20"	4.50	
9	38	6° 47' 20"	4.50	
10	452	1° 57' 17"	34.47	11.75
11	478	1° 57' 17"	23.50	
12	38	42° 32' 13"	28.61	
13	38	42° 32' 13"	28.61	
14	38	42° 32' 13"	28.61	
15	38	42° 32' 13"	28.61	
16	38	42° 32' 13"	28.61	



RECORDED JAN 21, 1976 FILE NO. 5303 140 BK 366 PGS 574, 554 56.

SHEET THREE OF THREE SHEETS
MacKay & Sompa
CIVIL ENGINEERS
SANTA CLARA CALIFORNIA
26284
364-1