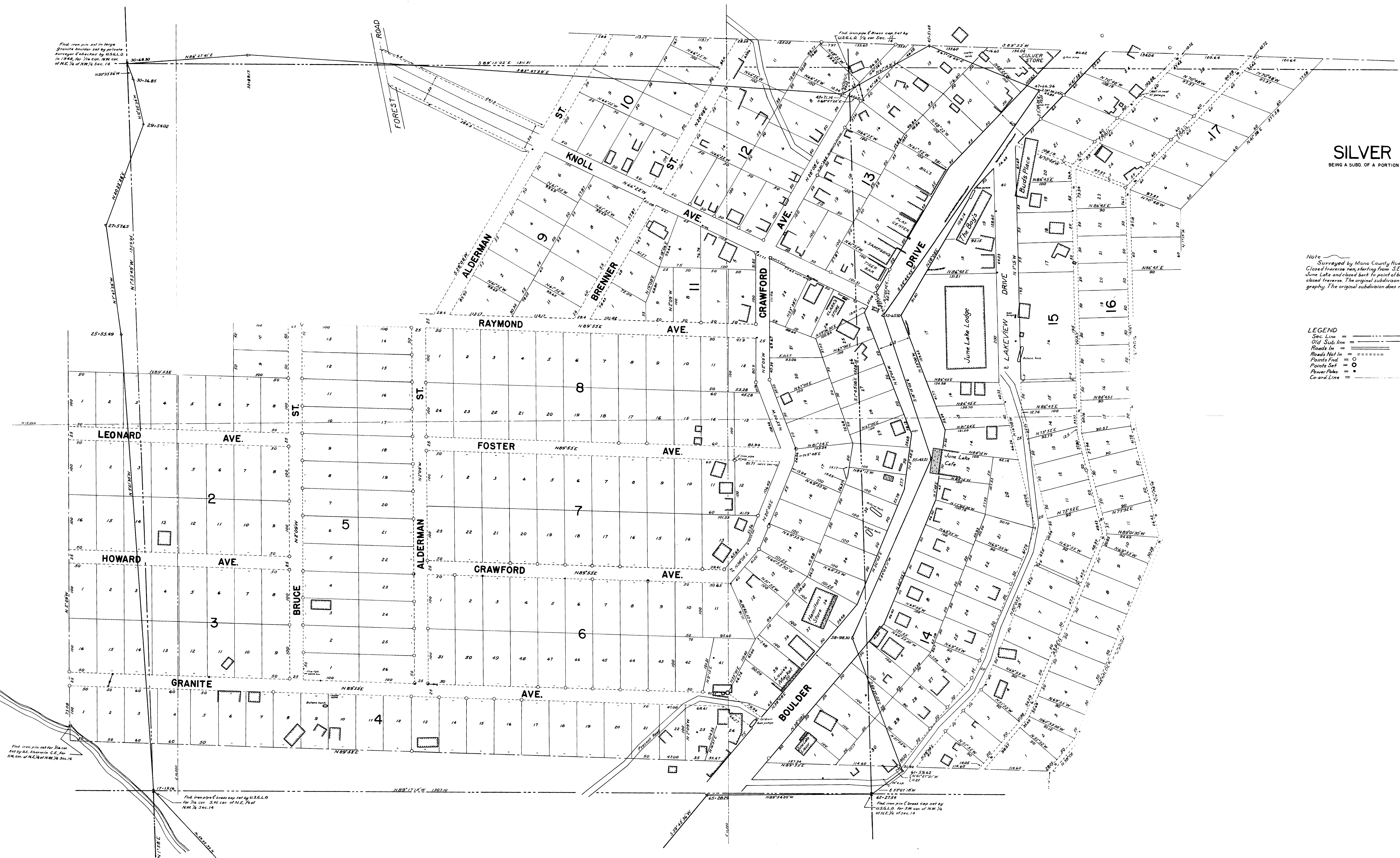
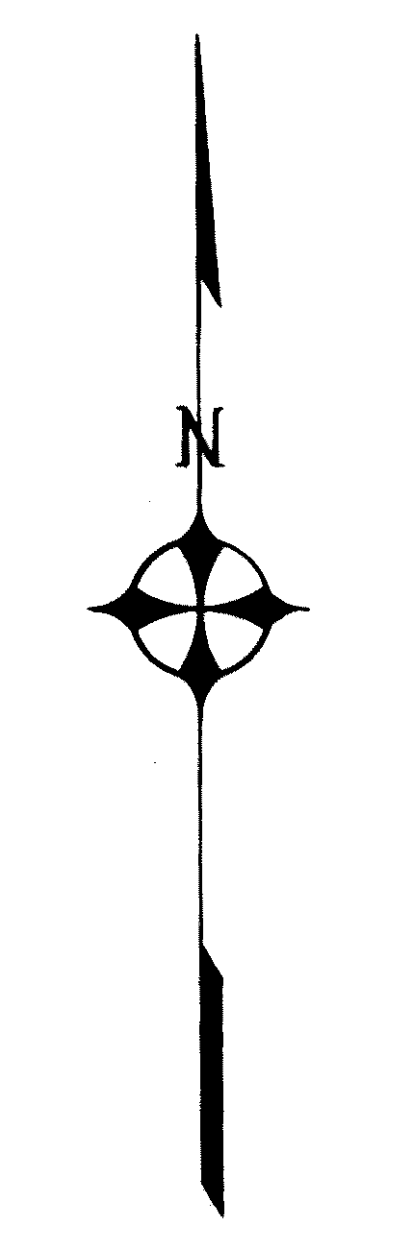


TRACT NO. 1  
SILVER LAKE PINES INCORPORATED  
BEING A SUBD. OF A PORTION OF NE 1/4 OF NW 1/4 AND A PORTION OF NW 1/4 OF NE 1/4 SECTION 14, T.2S. R.26E. MDB & M.  
MONO COUNTY CALIFORNIA  
SCALE 1"=50' OCT 1948

Note: Surveyed by Mono County Road dept.  
Closed traverse run starting from S.E. cor. of S. 1/4 of N. 1/4 of Sec. 14, through  
June Lake and closed back to point of beginning. All topography plotted, based on  
closed traverse. The original subdivision there being fitted to this traverse and topog-  
raphy. The original subdivision does not close.

- LEGEND
- Sec. Line
  - Old Sub. line
  - Roads In
  - Roads Not In
  - Points Set
  - Power Poles
  - Coard Line



Find iron pin set in large  
granite divider set by private  
surveyor & checked by U.S.G.L.O.  
in 1942, for 1/4 cor. NW cor.  
of NE 1/4 of NW 1/4 Sec. 14

Find iron pin set for 1/4 cor.  
set by R.E. Sherman C.E. for  
S.W. cor. of NE 1/4 of NW 1/4 Sec. 14

Find iron pin & brass cap set by U.S.G.L.O.  
for 1/4 cor. S.W. cor. of NE 1/4 of  
NW 1/4 Sec. 14

Find iron pin & brass cap set by  
U.S.G.L.O. for S.W. cor. of NW 1/4  
of NE 1/4 of Sec. 14