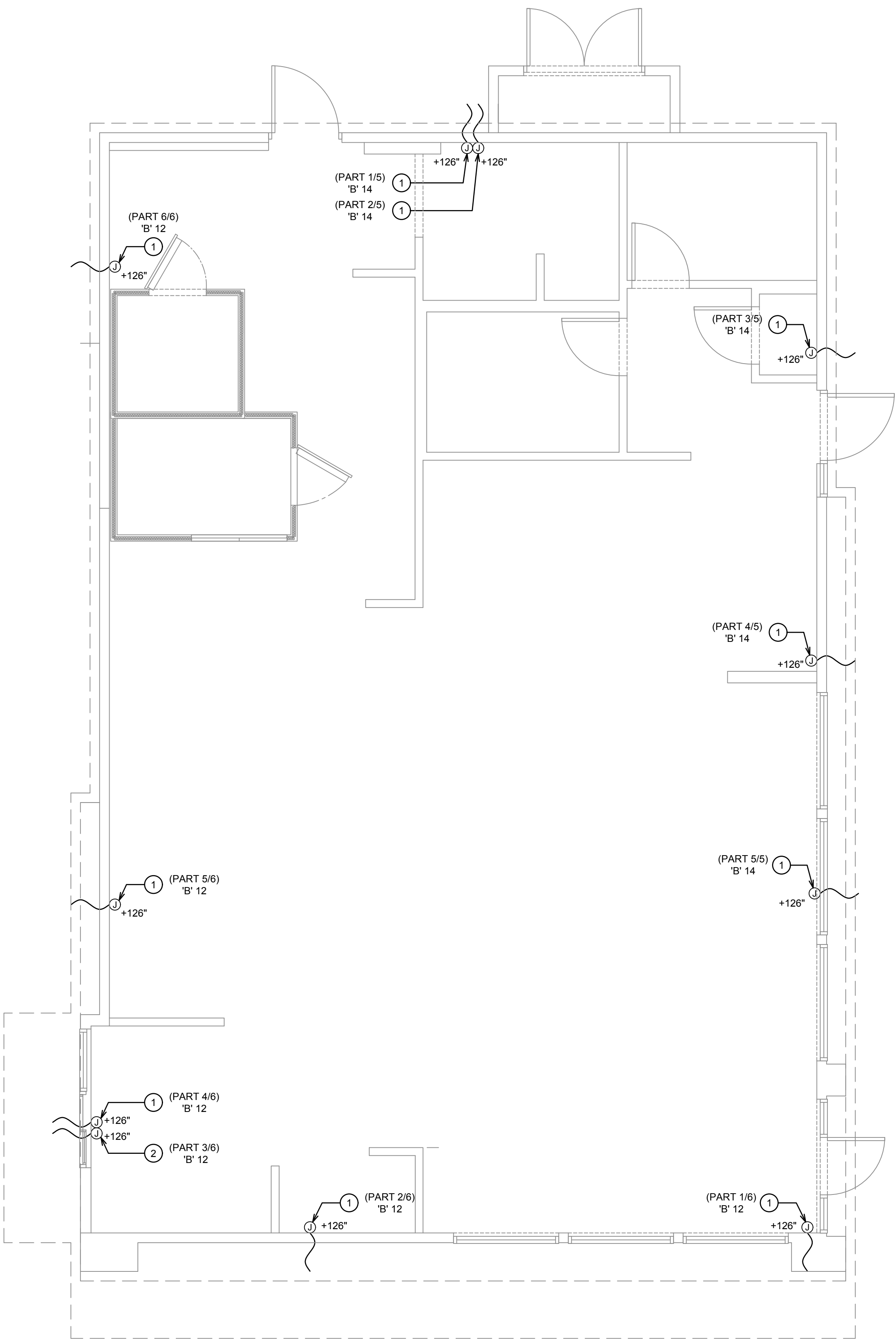


HA\KVPESK\DPESKE101_1 20 Nov 2018 - 3:12 pm



1. E.C. TO PROVIDE J-BOX WITH 3' WHIP FOR CONNECTION TO PANDA EXPRESS PROVIDED LIGHTED CANOPY. E.C. TO MAKE FINAL CONNECTION.
2. E.C. TO PROVIDE J-BOX WITH 3' WHIP FOR CONNECTION TO PANDA EXPRESS PROVIDED LIGHTED DRIVE THRU CANOPY. E.C. TO MAKE FINAL CONNECTION.

② CANOPY LIGHTING KEYED NOTES

2

NOT TO SCALE

E-101.1

CANOPY LIGHTING PLAN

1

Scale: 1/4"=1'-0"

E-101.1



PANDA EXPRESS INC.
1683 Walnut Grove Ave.
Rosemead, California
91770
Telephone: 626.799.9898
Facsimile: 626.372.8288

All ideas, designs, arrangement and plans indicated or represented by this drawing are the property of Panda Express Inc. and were created for use on this specific project. None of these ideas, designs, arrangements or plans may be used by or disclosed to any person, firm, or corporation without the written permission of Panda Express Inc.

REVISIONS:

ISSUE DATE:

1ST	PERMIT SET	10-05-18
2ND	BID SET	11-20-18

DRAWN BY: BEN

PANDA PROJECT #: S8-19-D6462
ARCH PROJECT #: 180044.013



engineering consultants
650 E. Agnew Road Suite 250 | Shearburg, IL 60173
T: 847.758.4700 | www.rtmconsultants.com
COA# 4215

PANDA EXPRESS

TRUE WARM & WELCOME 2200
CONESTOGA PKWY & HISTORICAL TRAIL
SHEPHERDSVILLE, KY 40165

E-101.1

CANOPY LIGHTING PLAN

BID SET 11.20.2018