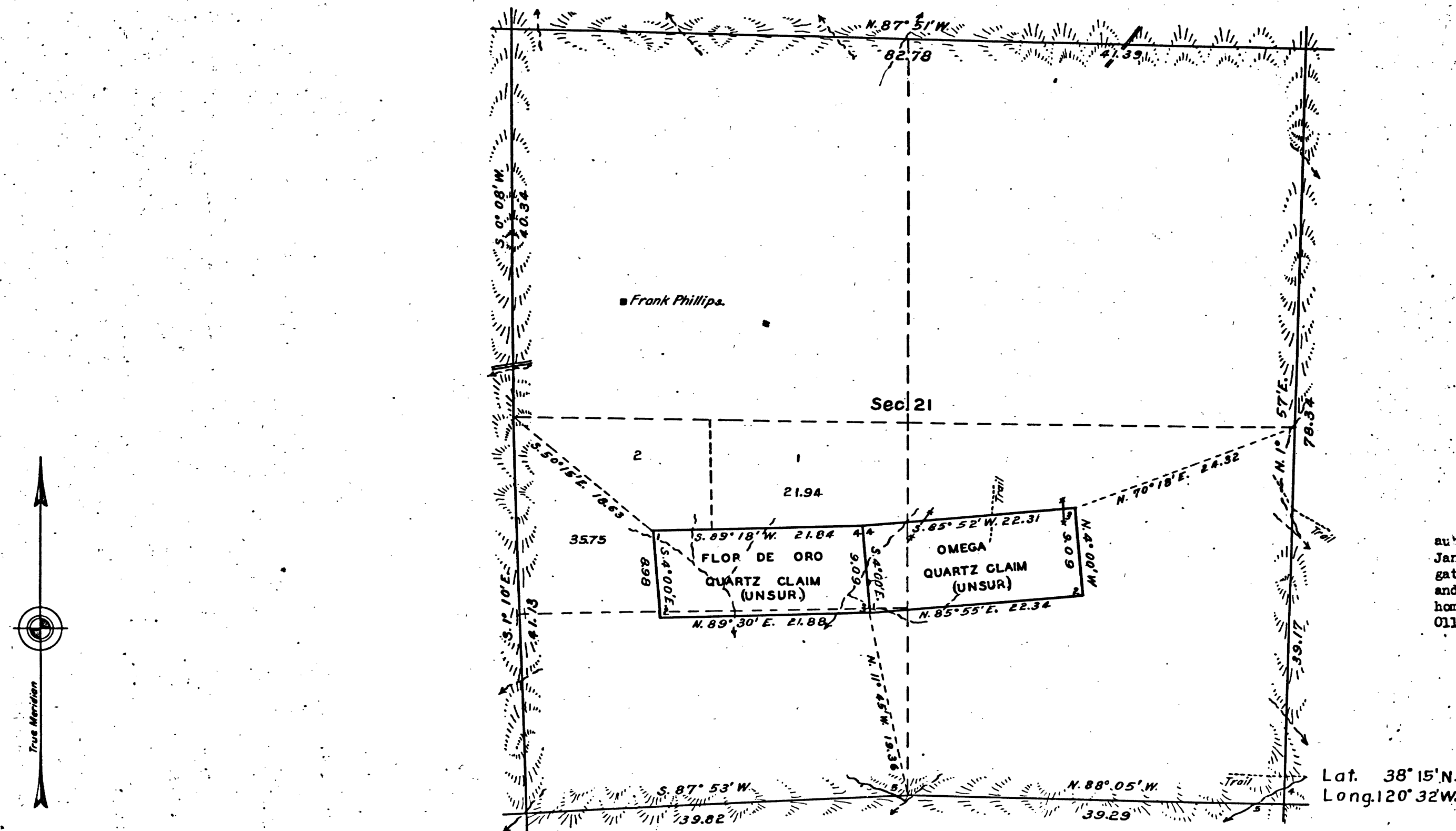


SUPPLEMENTAL PLAT OF SECTION 21,
TOWNSHIP N^o 5 NORTH, RANGE N^o 13 EAST, MOUNT DIABLO MERIDIAN, CALIFORNIA.

5



This survey has been executed under authority contained in letter "E" dated January 5, 1925, for the purpose of segregating the Omega quartz Claim (Unsurveyed) and the Flor De Oro (Unsurveyed) from the homestead entry of Frank Phillips, Sacramento 011939.

Scale: 10 Chains to an Inch.

LINES DESIGNATED	BY WHOM SURVEYED	NO	GROUP DATE	MILEAGE MLS. CHS	WHEN SURVEYED BEGUN COMPLETED
Exterior					
Subdivisional	Dupree R. Averill	142	Feb 11, 1925	4 1.70	May 6, 1926 May 8, 1926
Mining Claims	U.S. Surveyor.	"	"	1 35.53	" 7, " " 7, "
Miscellaneous	"	"	"	62.31	" 7, " " 8, "

Original
Form N-32

Office of U.S. Supervisor of Surveys

Denver, Colorado, Feb. 13, 1928

The above supplemental plat of Section 21, Township No. 5 North, Range No. 13 East, Mount Diablo Meridian, California, is strictly conformable to the field notes of the survey thereof which have been examined and approved.

Wm. H. Johnson
U.S. Supervisor of Surveys.

DEPARTMENT OF THE INTERIOR
GENERAL LAND OFFICE

Washington, D.C., February 28, 1928.

The survey represented by this plat having been correctly executed in accordance with the requirements of law and the regulations of this office, is hereby accepted.

Thos. C. Coville
Assistant Commissioner.

41 441

T5N R13E MD

9

BLM 345