

CORNER RECORD

Agency Index

BK 125 PG 47

Document Number CR 12850

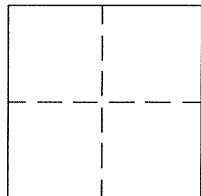
City of Berkeley

County of Alameda, California

Brief Legal Description B2215 City Monument westerly of APN 55-1853-16, Panoramic Wy.

CORNER TYPE

COORDINATES (Optional)

Government Corner ☐ Control ☒Meander ☐ Property ☐Rancho ☐ Other ☐

Date of Survey 01/28/2018

N: E:

Elevation: 111.48'

Units: Metric ☐ U.S. Survey Foot ☒

Horizontal Datum

Zone Epoch Date

Vertical Datum ASSUMED

☐ Complies with Public Resources Code §§ 8801-8819☐ Complies with Public Resources Code §§ 8890-8902PLS Act Ref: ☐ 8765(d) ☒ 8771 ☐ 8773 ☐ Other:Corner/Monument: ☒ Left as found ☐ Established ☐ Rebuilt ☒ Pre-Construction☐ Found and tagged ☐ Reestablished ☒ Referenced ☐ Post-Construction

Narrative of corner identified and monument as found, set, reset, replaced, or removed:

☒ See sheet #2 for description(s): FOUND(1) 7/8" IRON ROD IN WELL MONUMENT IN LIEU OF 3/4" PIN PER RECORD OF SURVEY 2858, BOOK 43, PAGE 49, CITY MONUMENT B2215.

REFERENCE MONUMENTS WERE FOUND, SET & MEASURED TO PERPETUATE EXISTING MONUMENT PURSUANT TO THE PLS ACT SECTION 8771 PRIOR TO CONSTRUCTION. NO CLAIM IS MADE REGARDING THE CORRECTNESS OF THE POSITIONS OF SAID MONUMENTS, NOR THE DIMENSIONAL RELATIONSHIP TO STREET CENTERLINES OR PROPERTY BOUNDARIES.

SURVEYOR'S STATEMENT

This Corner Record was prepared by me or under my direction in conformance with

the Professional Land Surveyors' Act on February 4th, 2019.

Signed Mark E. Reinhardt P.L.S. No. 6392

COUNTY SURVEYOR'S STATEMENT

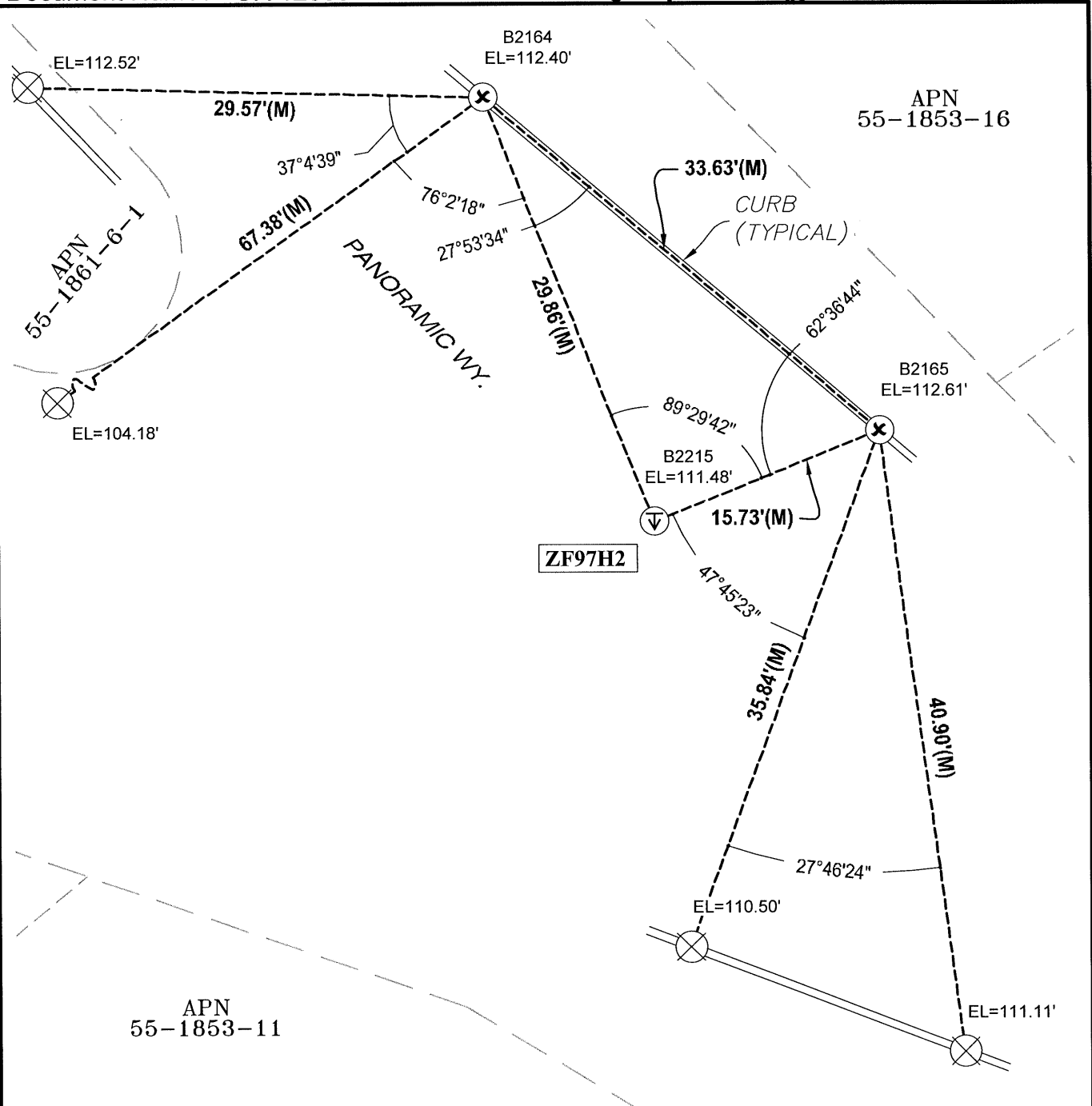
This Corner Record was received 10/11, 2019

and examined and filed 10/11, 2019.

Signed D. Ian Wilson P.L.S. or R.E. No. 7010Title County Surveyor

County Surveyor's Comment



**LEGEND**

M = MEASURED

R = RECORD

Ⓢ = FOUND (B2215) 7/8" IRON ROD IN WELL MONUMENT IN LIEU OF 3/4 PIN per (R1)

ⓧ = SET 1-1/4" BRASS DISK MARKED "PLS 6392" IN CURB

ⓧ = FOUND SCRIBED "X" IN CURB, NO RECORD

REFERENCE(R1) Record of Survey 2858
Book 43, Page 49**NOTES**Elevations on reference points
were established using a Sokkia
B20 Automatic 32X level.

AA##A#

- ALAMEDA COUNTY MONUMENT ID

0 5' 10'

SCALE: 1"=10'