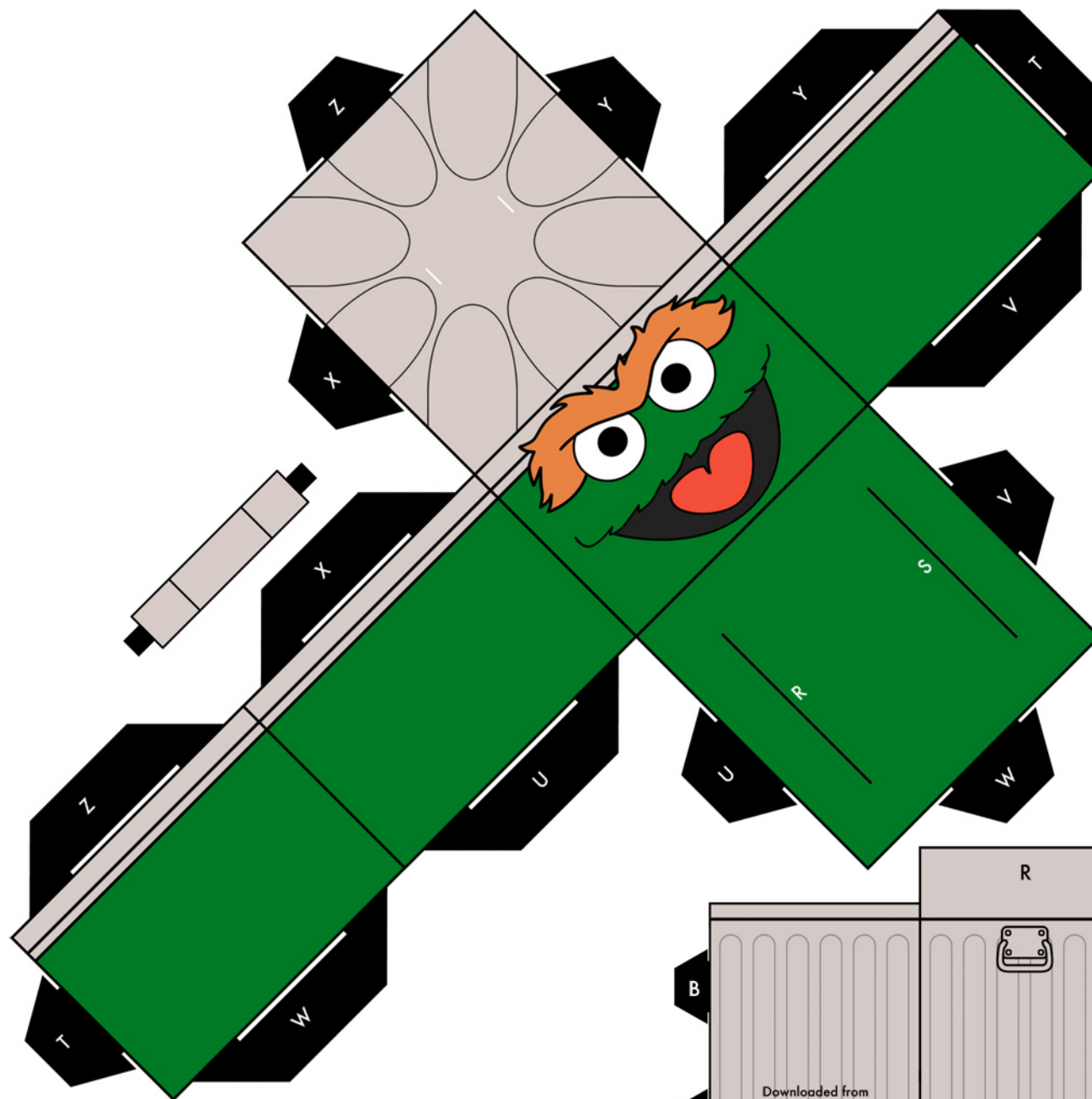
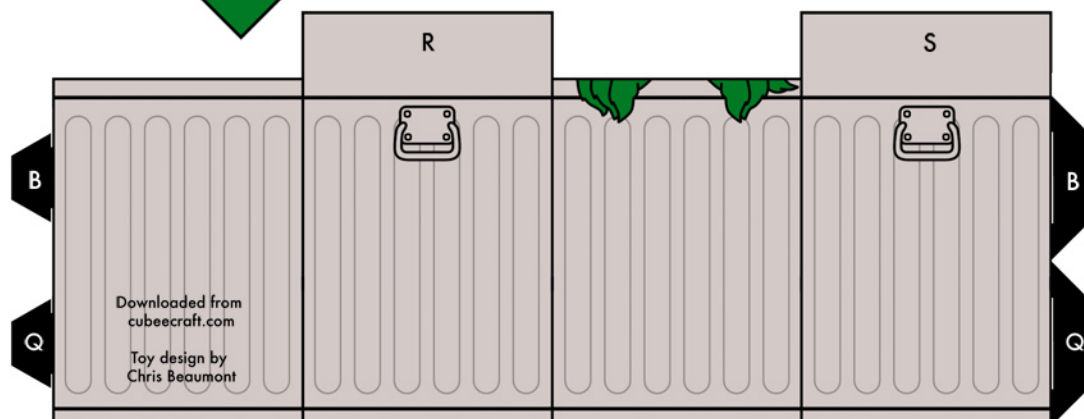
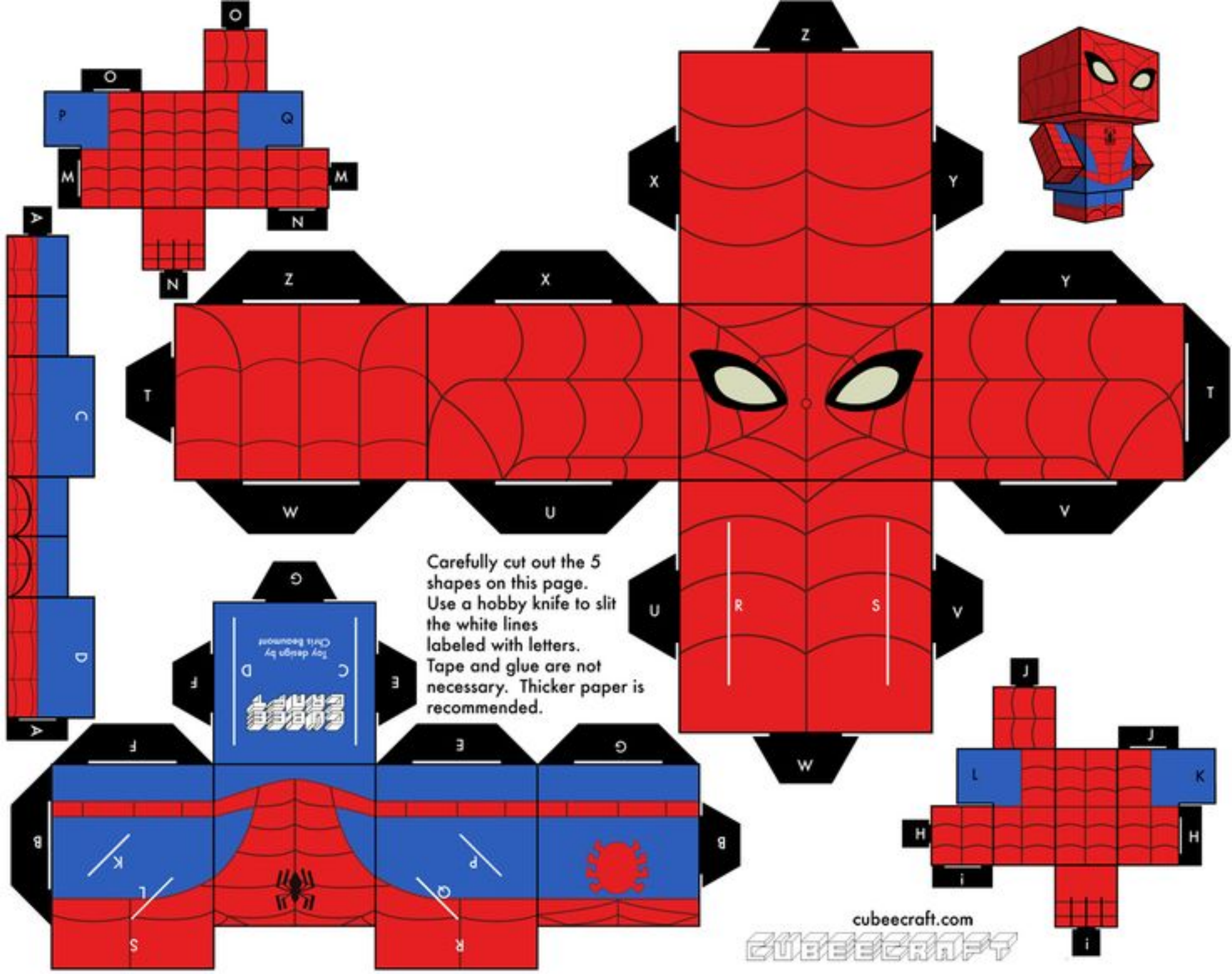


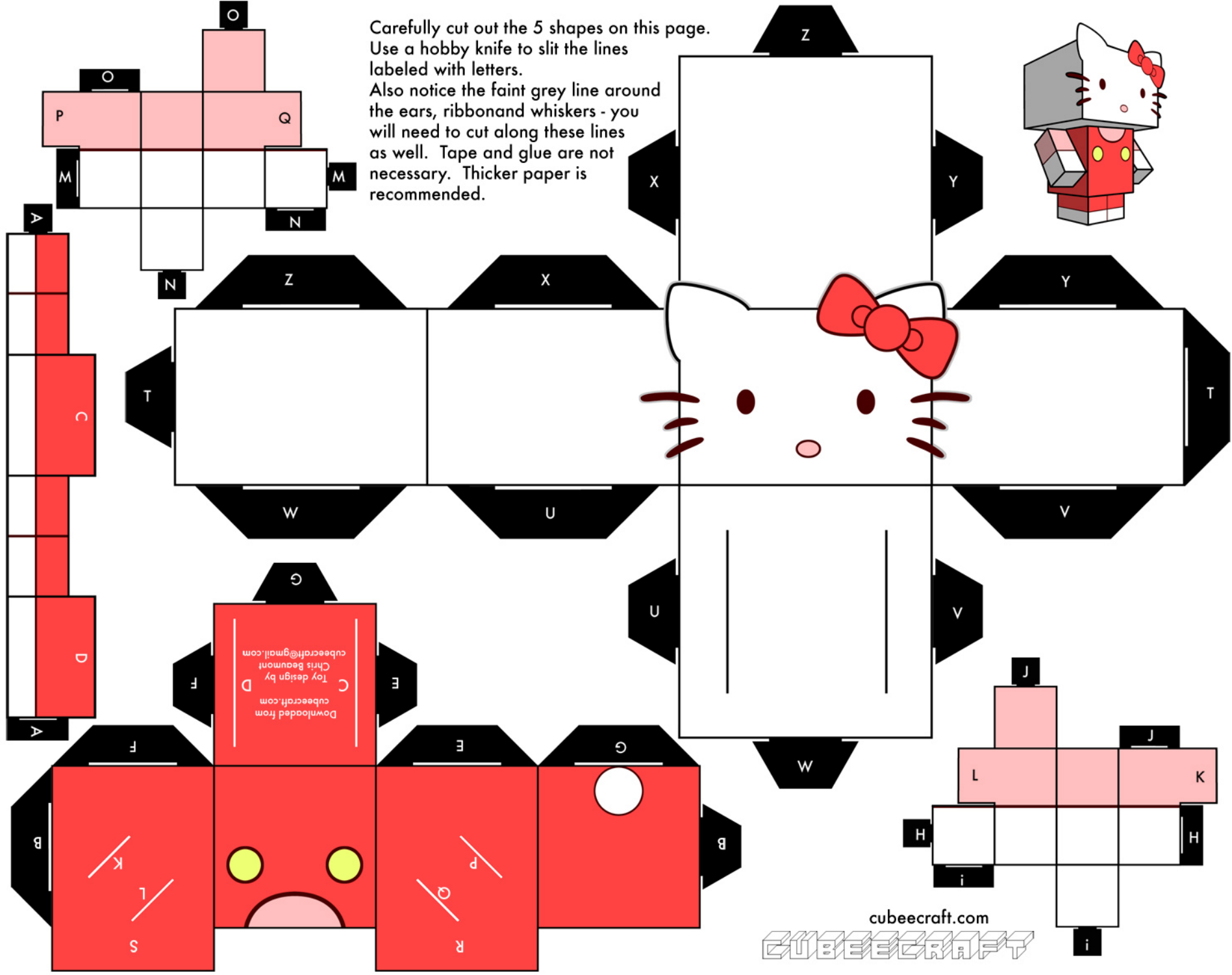
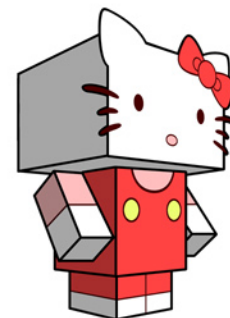
Carefully cut out the shapes on this page. Use a hobby knife to slit the lines labeled with letters. Don't forget to slit the white lines on the top of his head where the garbage can handle will go. Tape and glue are not necessary. Thicker paper is recommended.

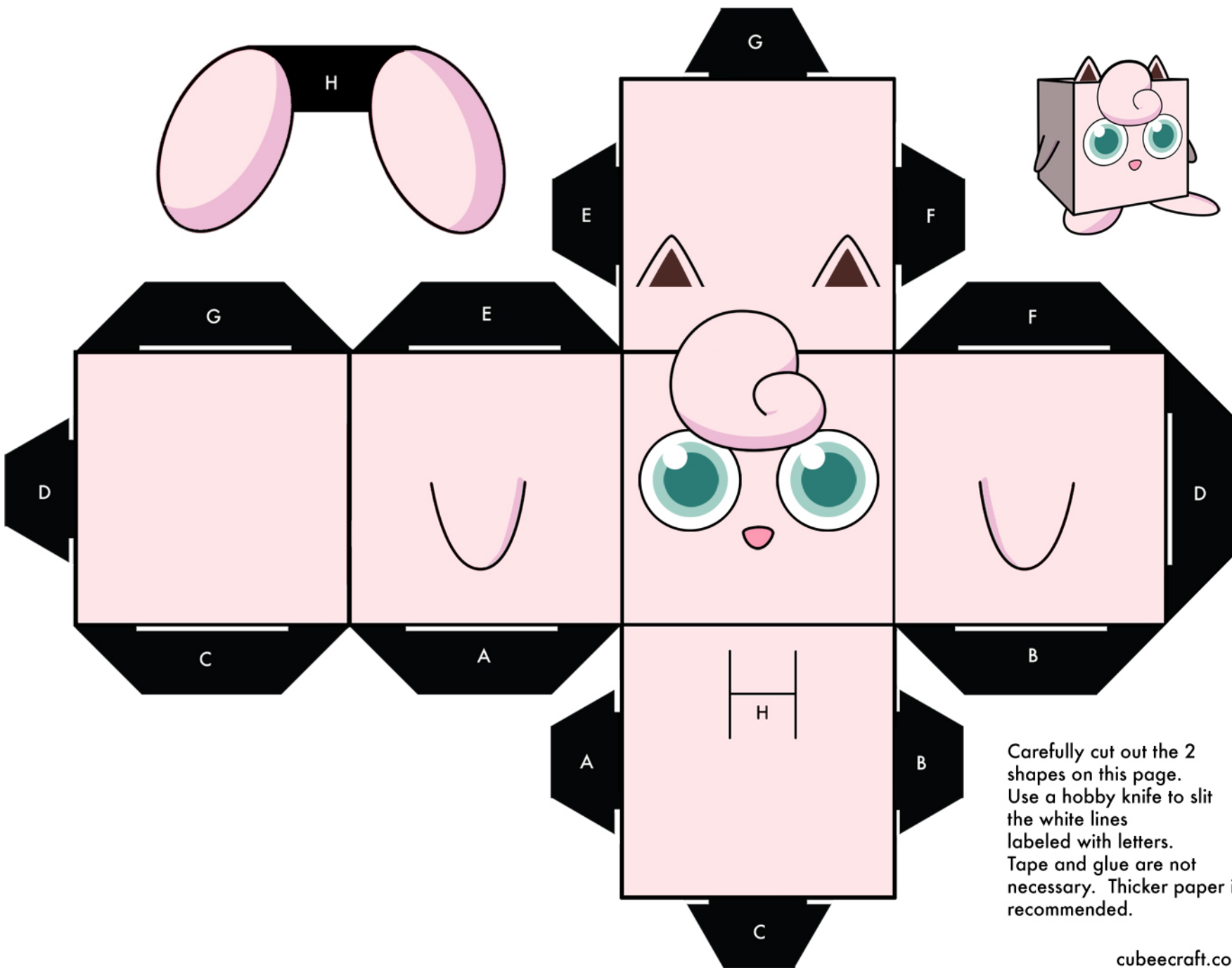
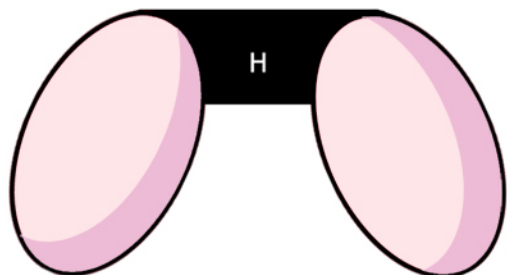




Carefully cut out the 5 shapes on this page. Use a hobby knife to slit the white lines labeled with letters. Tape and glue are not necessary. Thicker paper is recommended.

Carefully cut out the 5 shapes on this page.
Use a hobby knife to slit the lines
labeled with letters.
Also notice the faint grey line around
the ears, ribbon and whiskers - you
will need to cut along these lines
as well. Tape and glue are not
necessary. Thicker paper is
recommended.





Carefully cut out the 2 shapes on this page. Use a hobby knife to slit the white lines labeled with letters. Tape and glue are not necessary. Thicker paper is recommended.

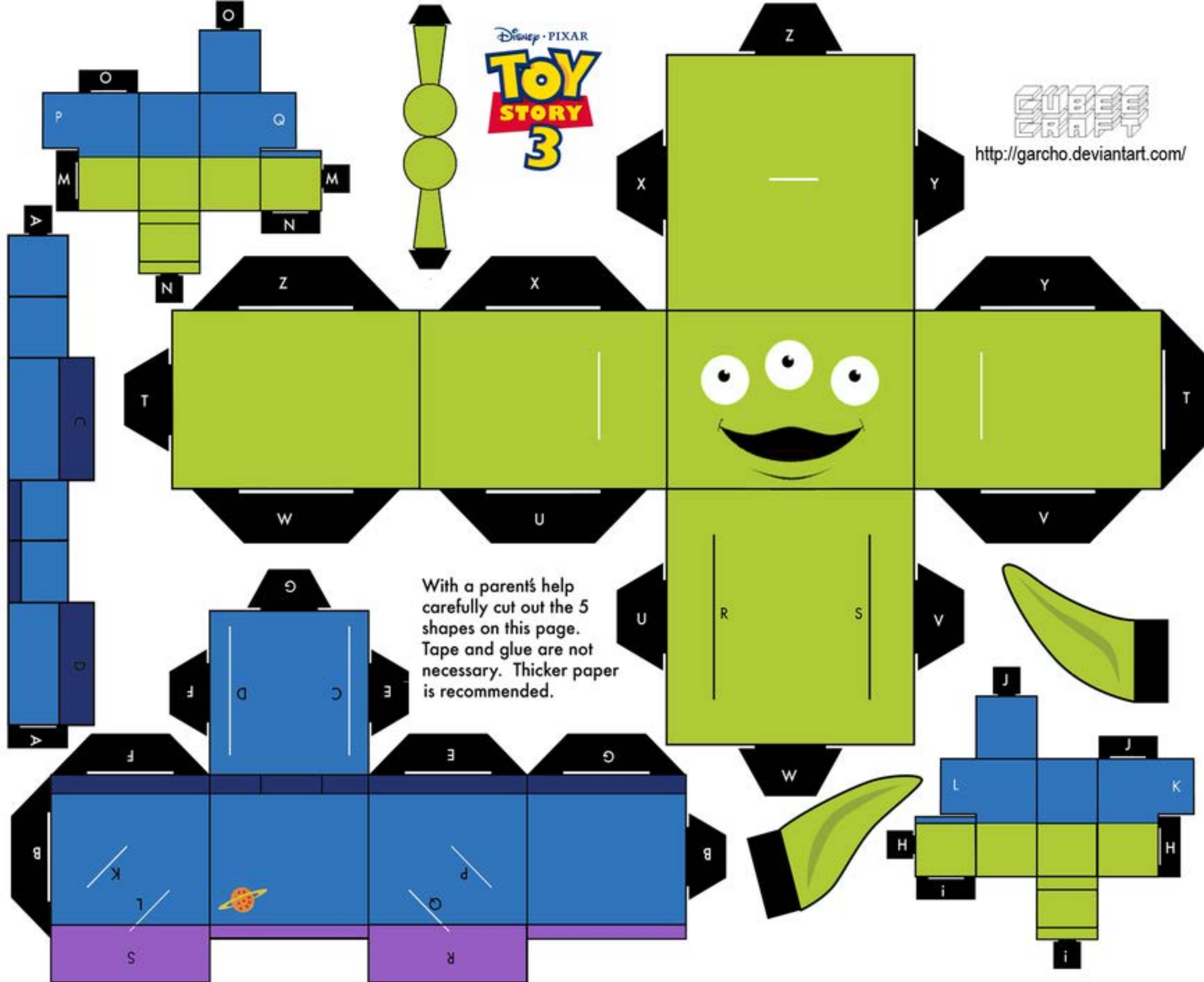
cubecraft.com

CUBEECRAFT



<http://garcho.deviantart.com/>

With a parent's help
carefully cut out the 5
shapes on this page.
Tape and glue are not
necessary. Thicker paper
is recommended.



PHIDIAS GOLD™

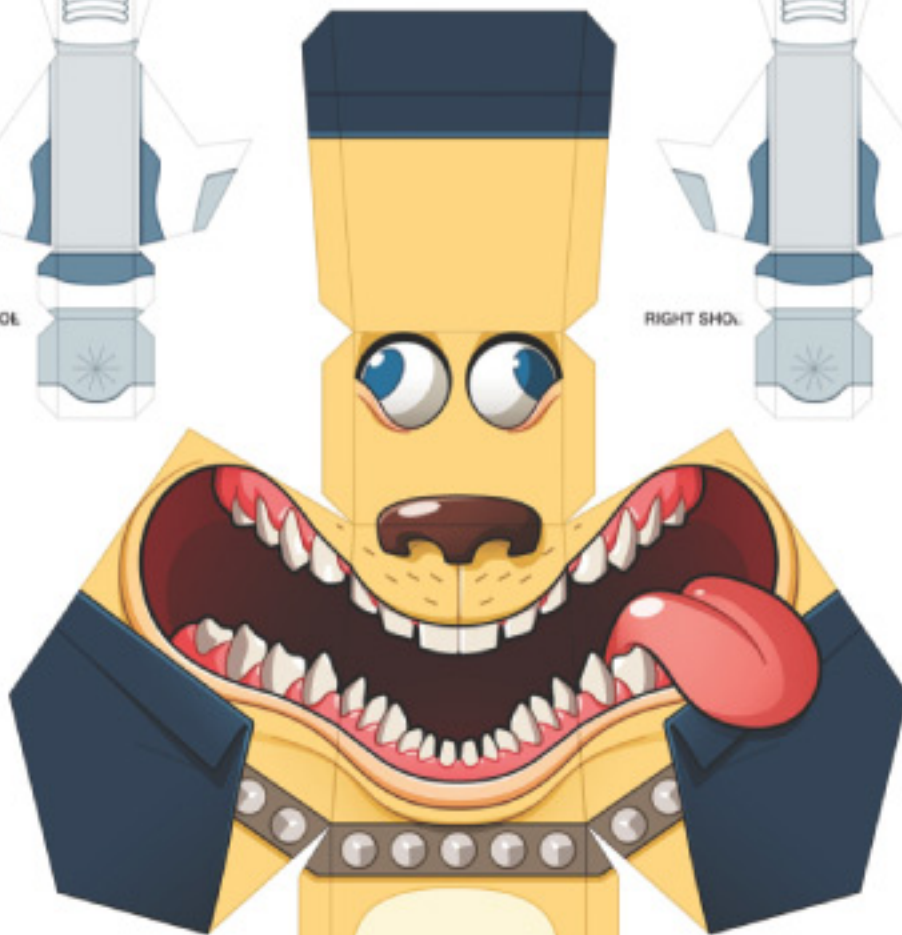
PAPER TOY TEMPLATE
WWW.PHIDIASGOLD.COM



LEFT SHOE



RIGHT SHOE



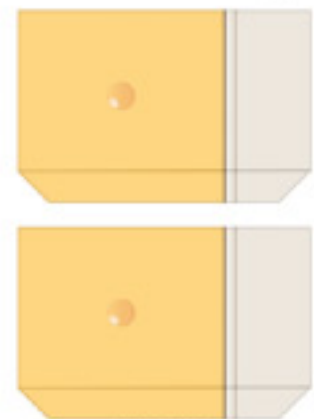
EARS



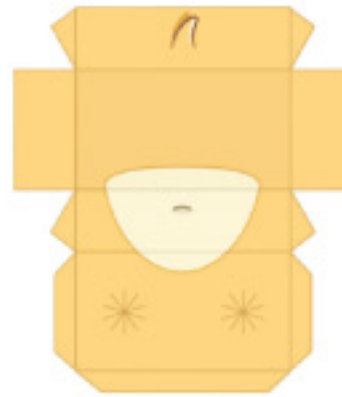
LEFT HAND



RIGHT HAND



ROLLED LEGS



SHORTS

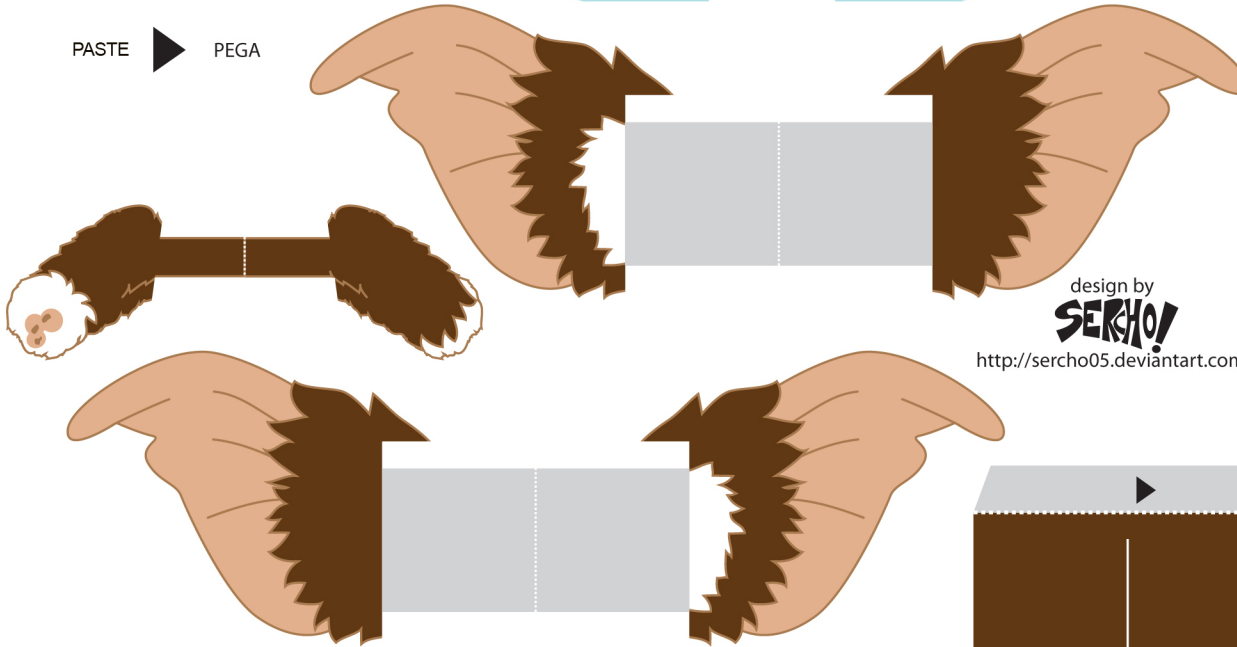


1. cut all the figures for their contour
2. for the ears and hands, bent inwards in the middle and paste, so you have figures on both sides
3. to enter the ears, hands and head, to the body, make a hole in the body and head, along the white line
4. double the figures by the dotted line and paste where the mark shows



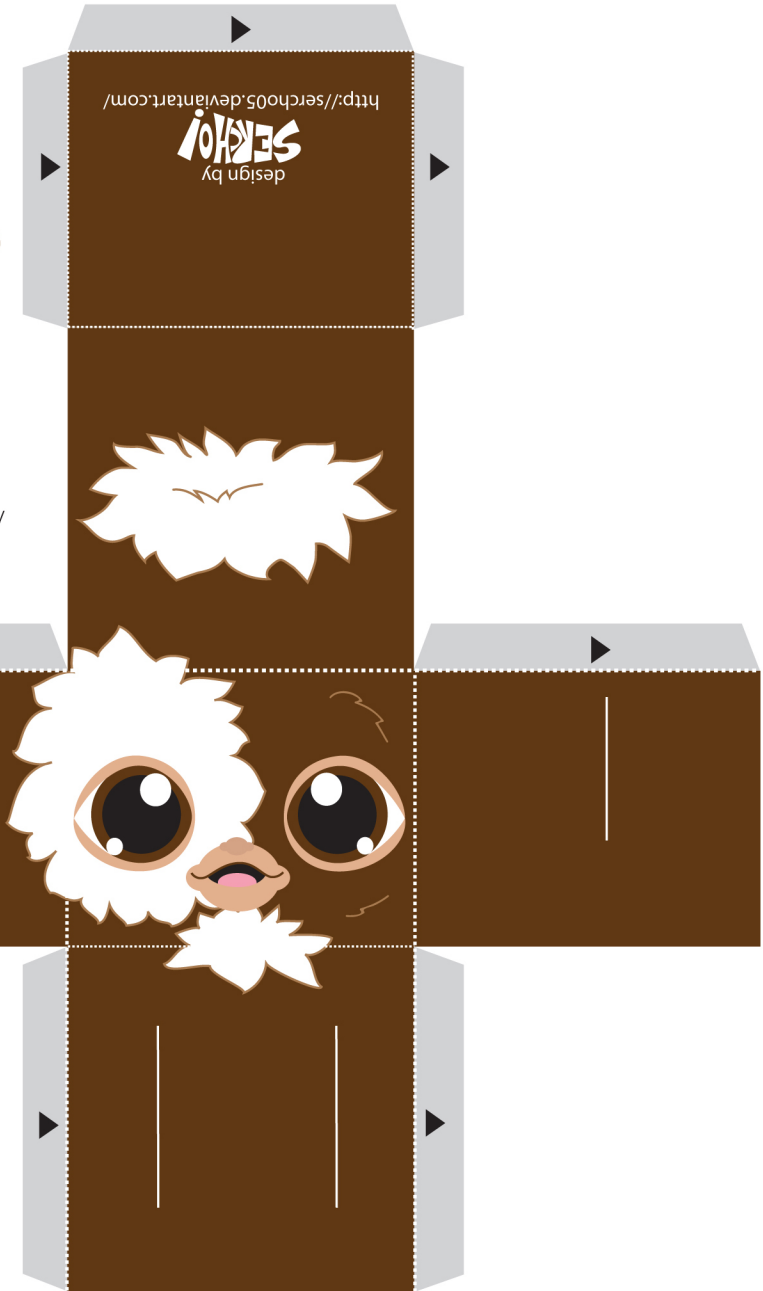
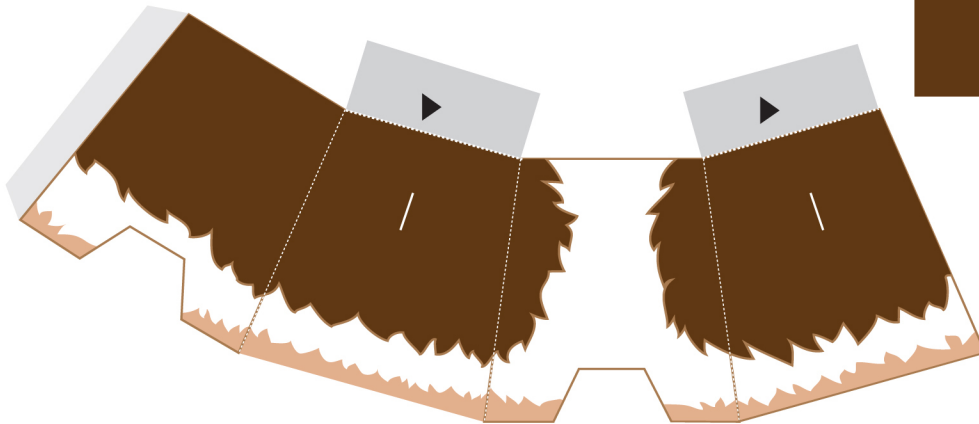
FOLD - DOBLA

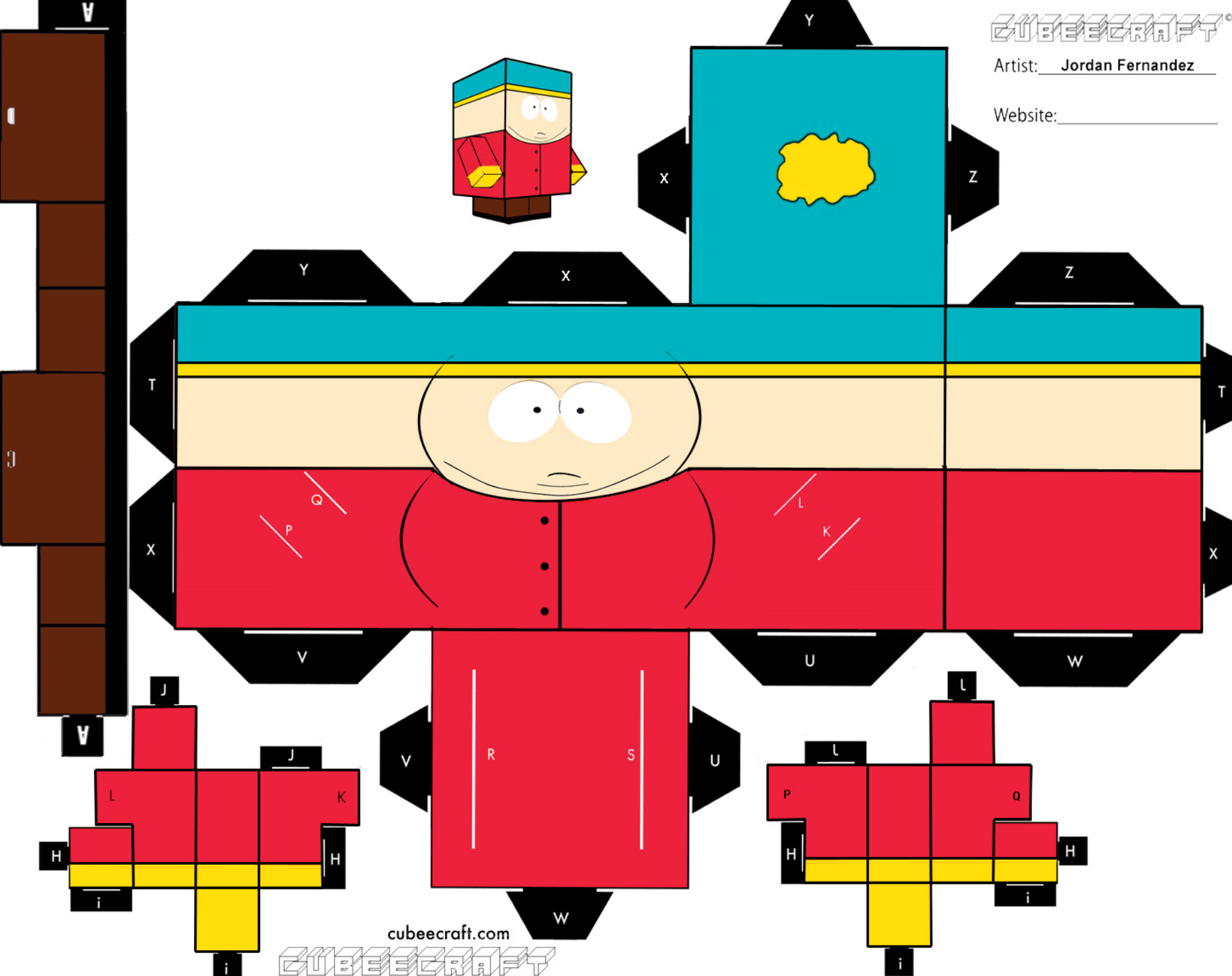
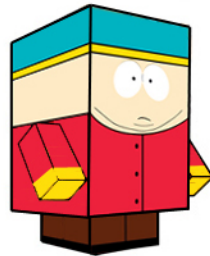
PASTE ► PEGA

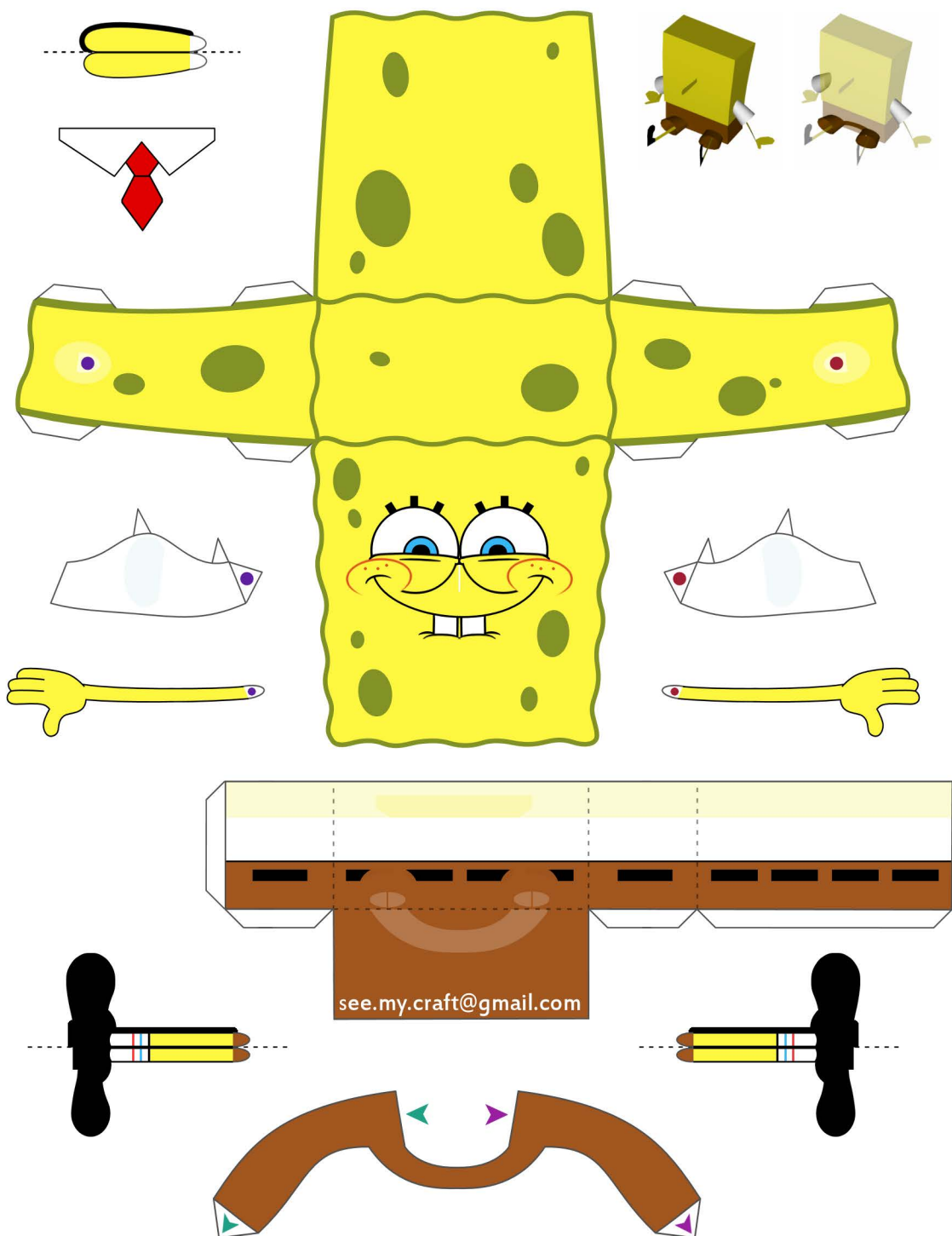


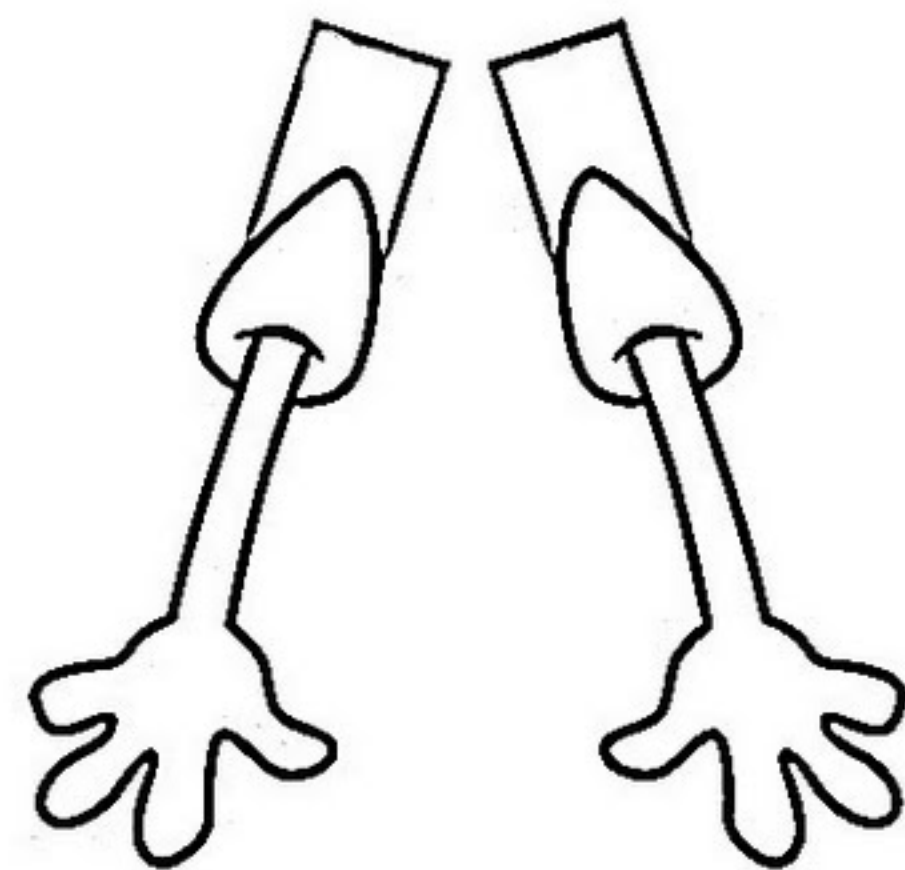
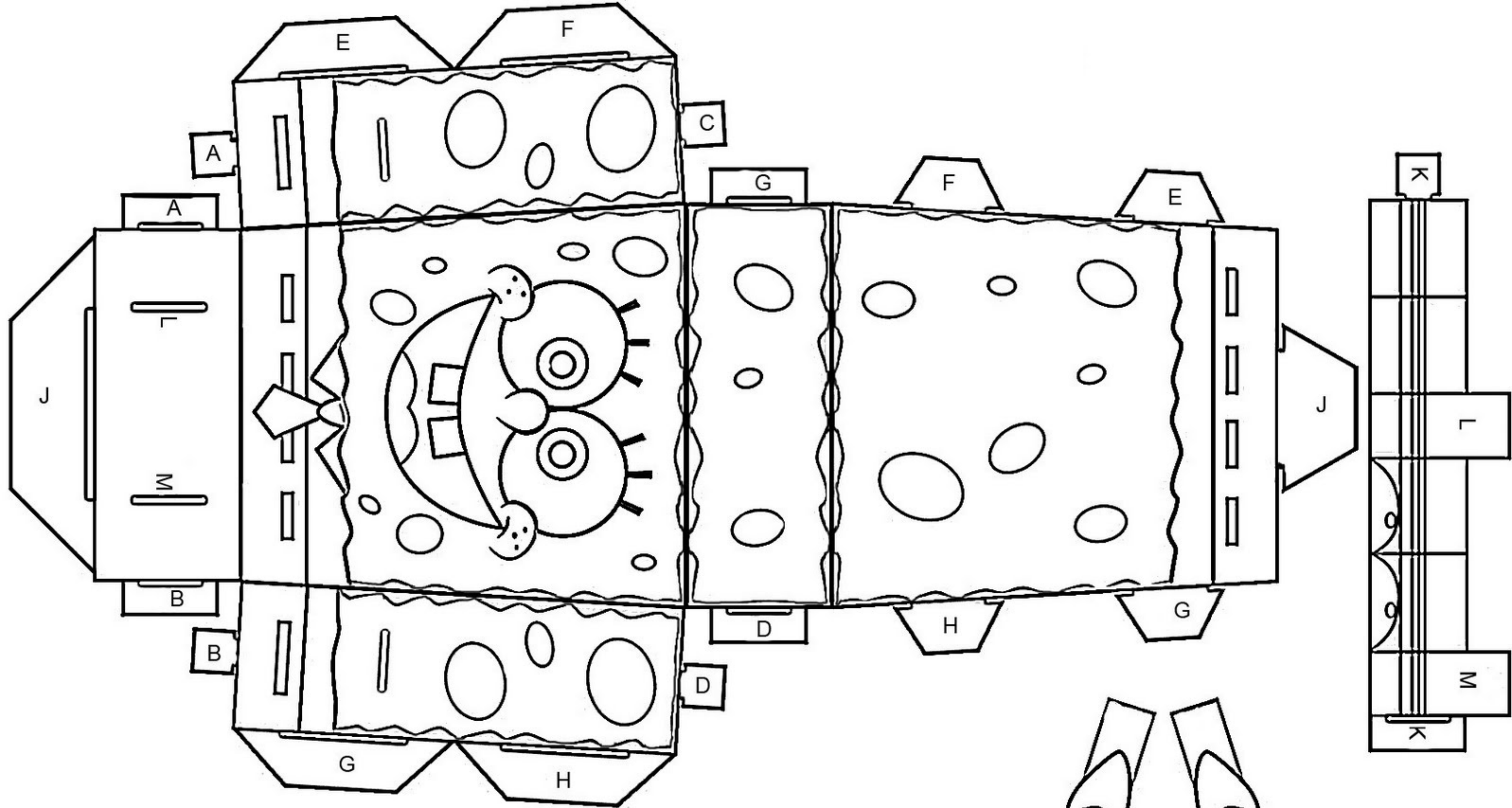
design by
SERCHO!

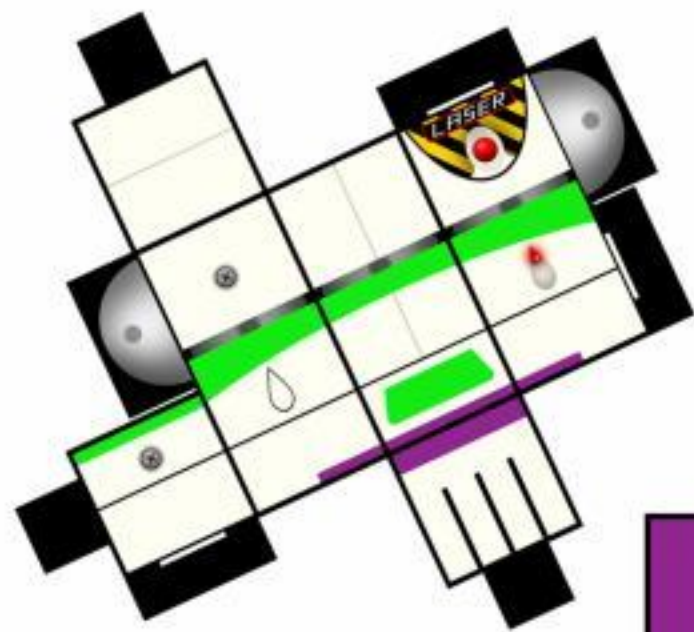
<http://sercho05.deviantart.com/>



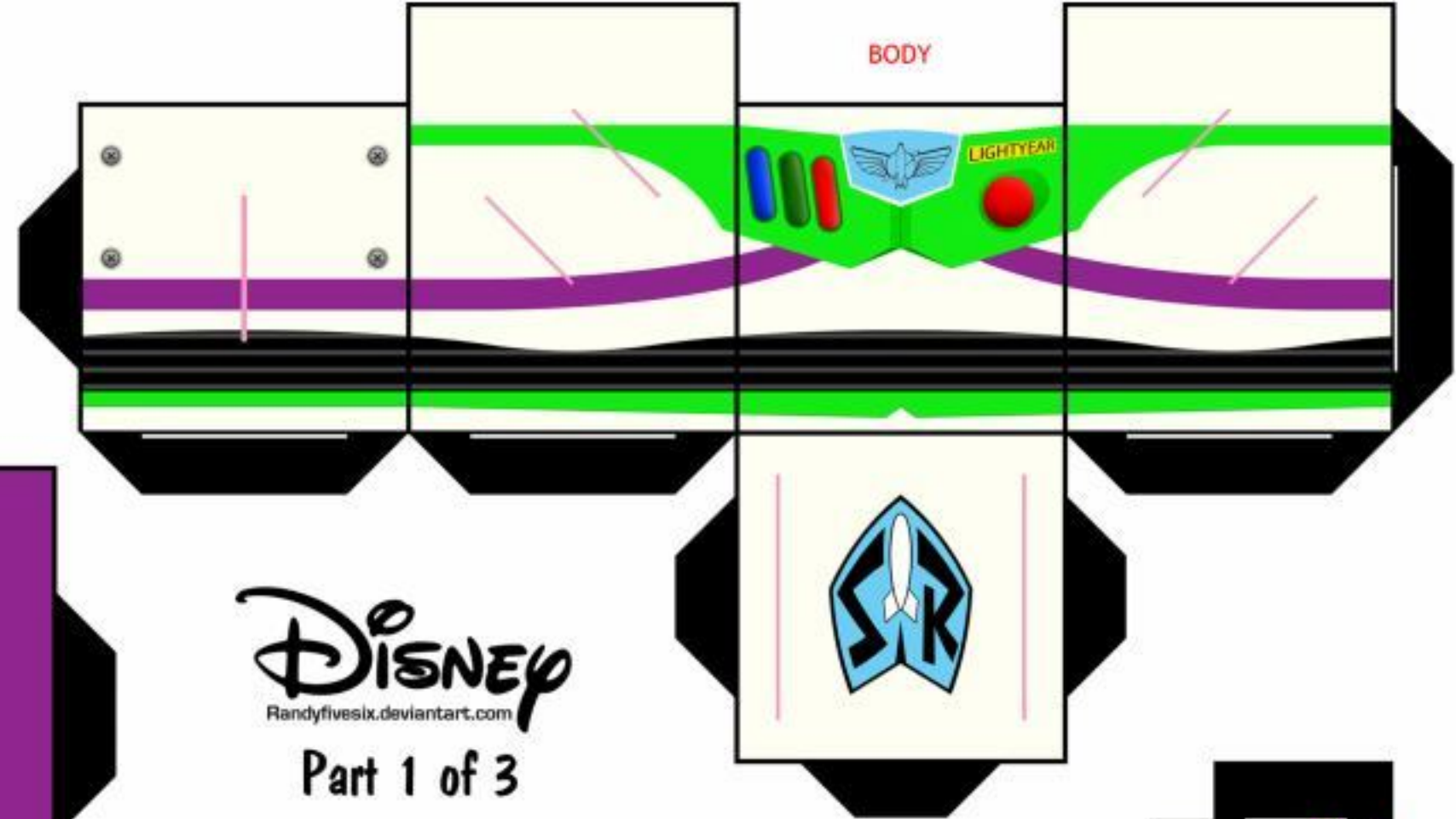




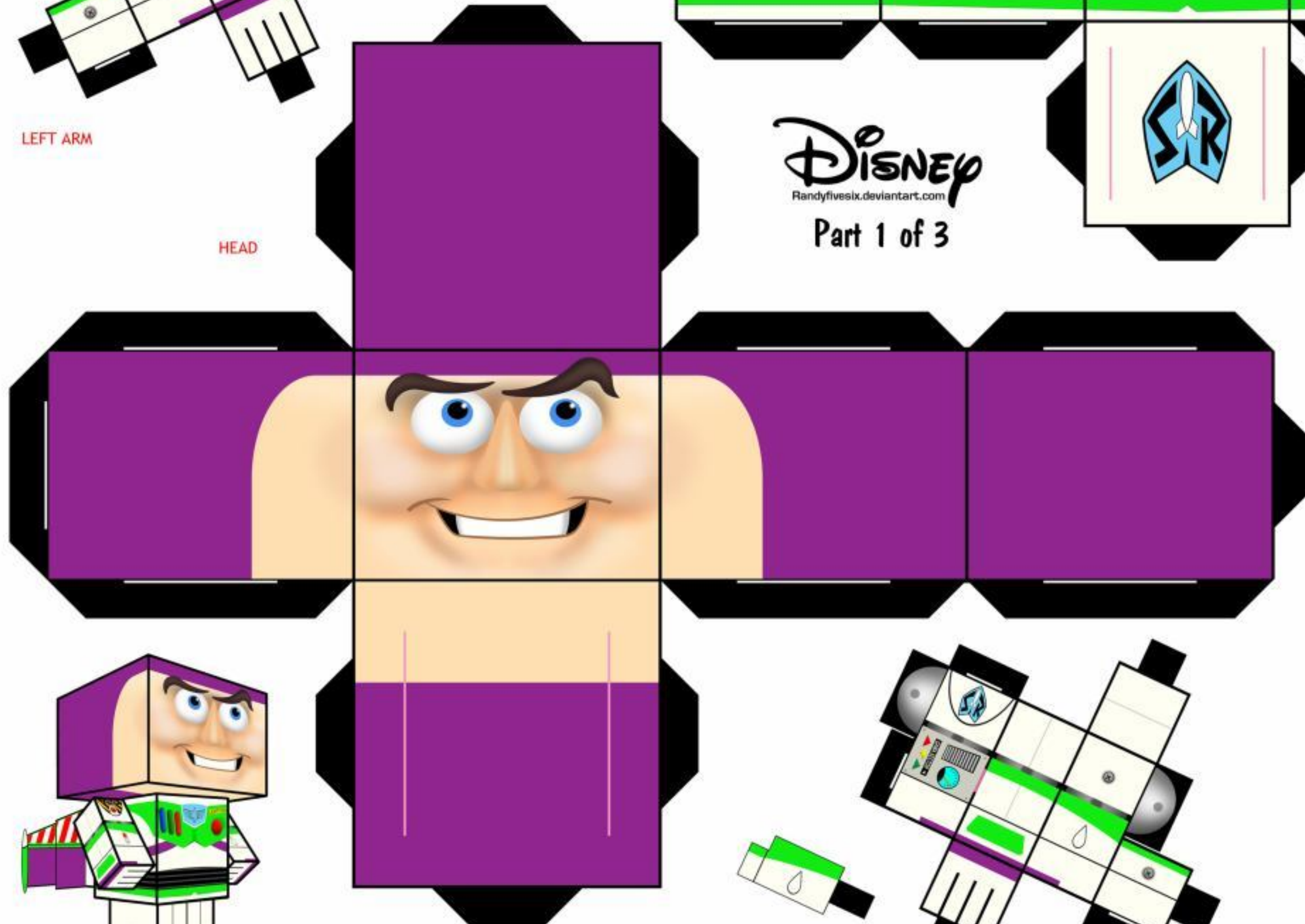




LEFT ARM



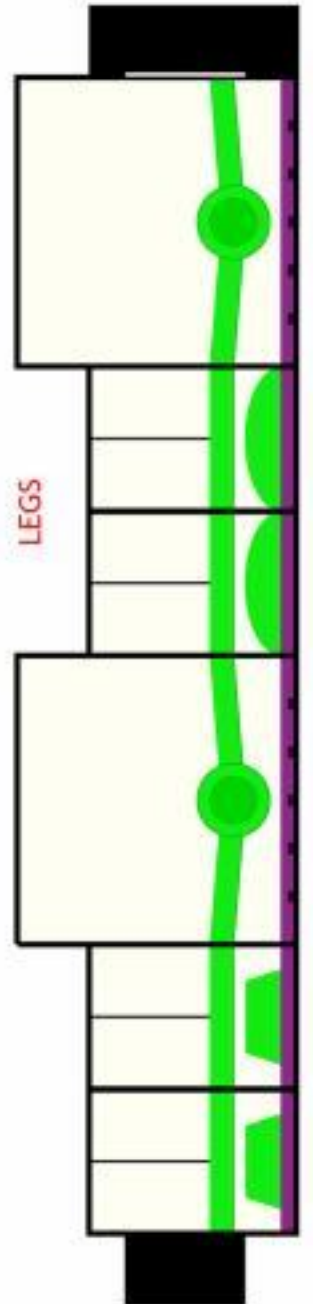
BODY



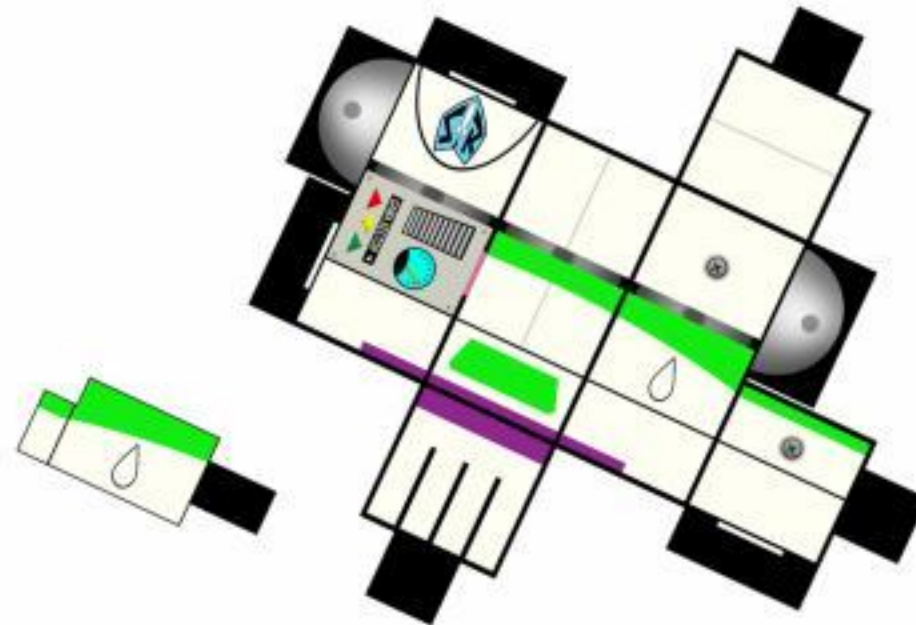
HEAD

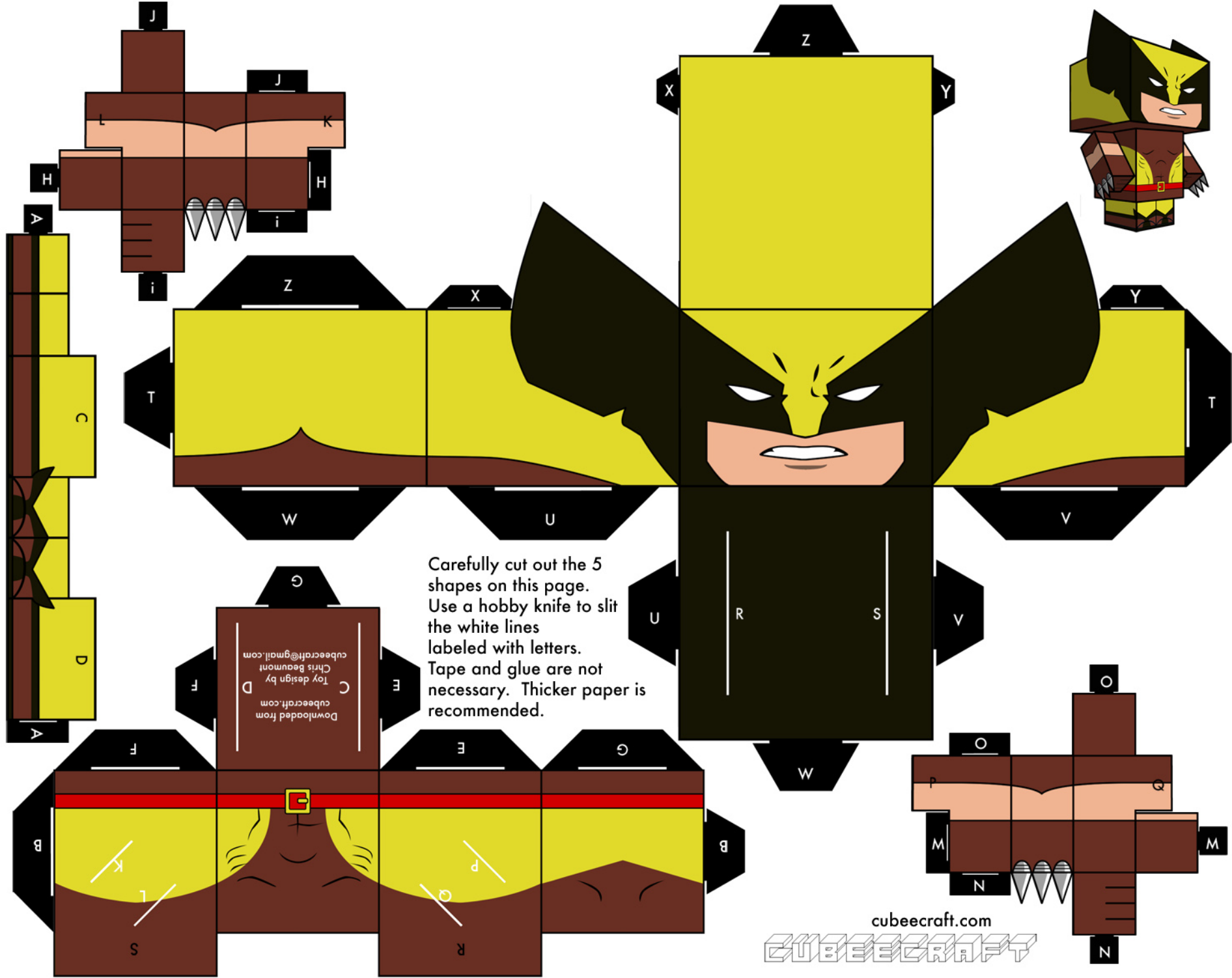
Disney
Randyfivesix.deviantart.com

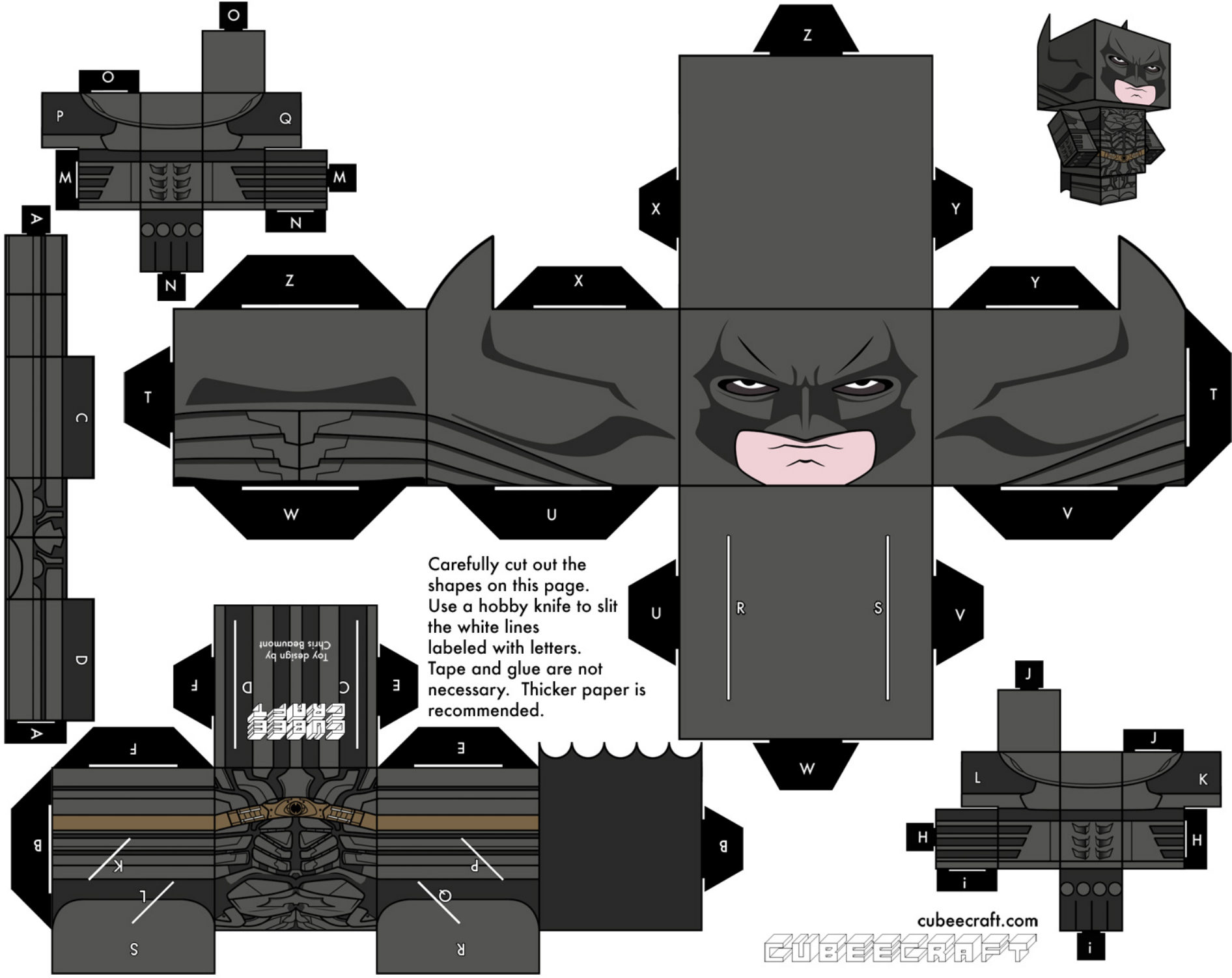
Part 1 of 3

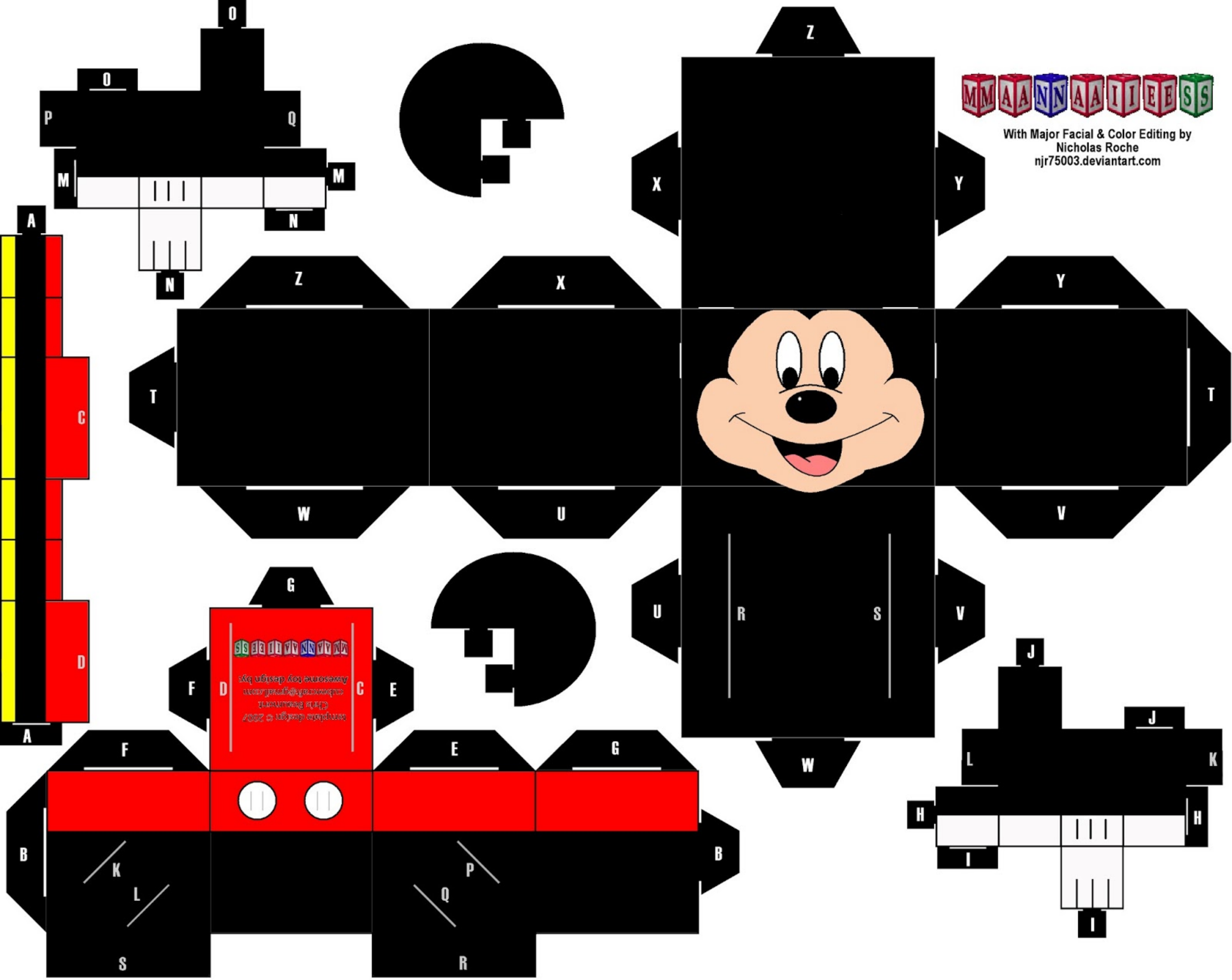


LEGS









With Major Facial & Color Editing by
Nicholas Roche
njr75003.deviantart.com

M M A A N N A A I I E E S S

Copyright © 2007
This document
is a trademark of
Walt Disney
and may not be
reproduced or
distributed
without
written
permission
from
Walt Disney
Company

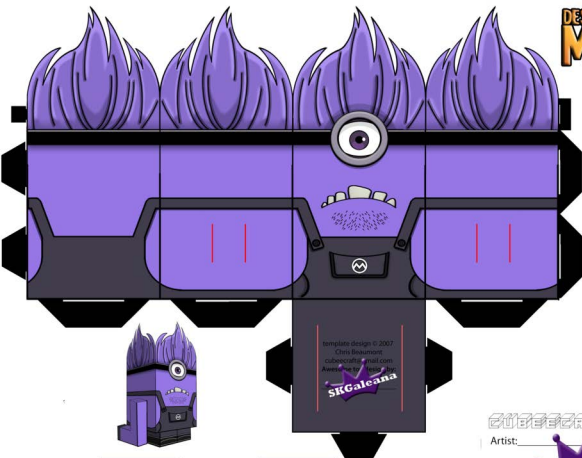
HEAD

LEGS

Disney
FROZEN
Olaf

TORSO

DESPICABLE ME 2



CUBECRAFT®

Artist: _____

Website: _____



RIGHT ARM

Carefully cut out the shapes on this page. Use a hobby knife to cut the white lines. Folds and glue are not necessary. Double paper is recommended.

Name: John Doe

Character Sheet

For more custom designs, go to dallingsgraphics.com or dallingsgraphics.blogspot.com

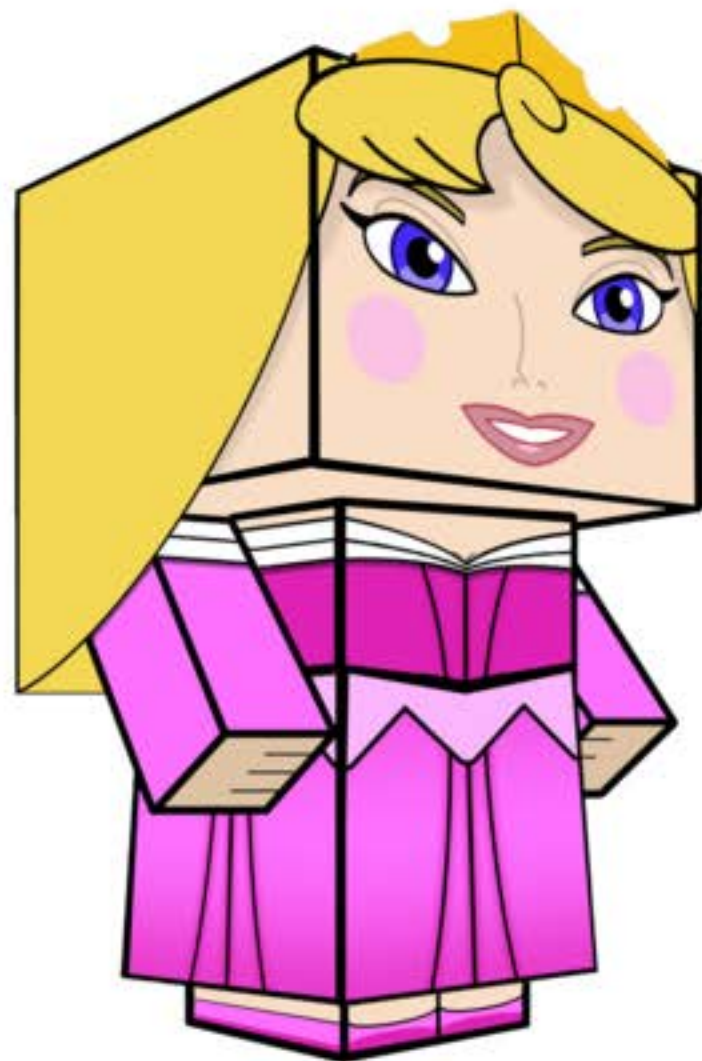
HEAD

LEFT ARM

TORSO

contact: dallingsgraphics@gmail.com

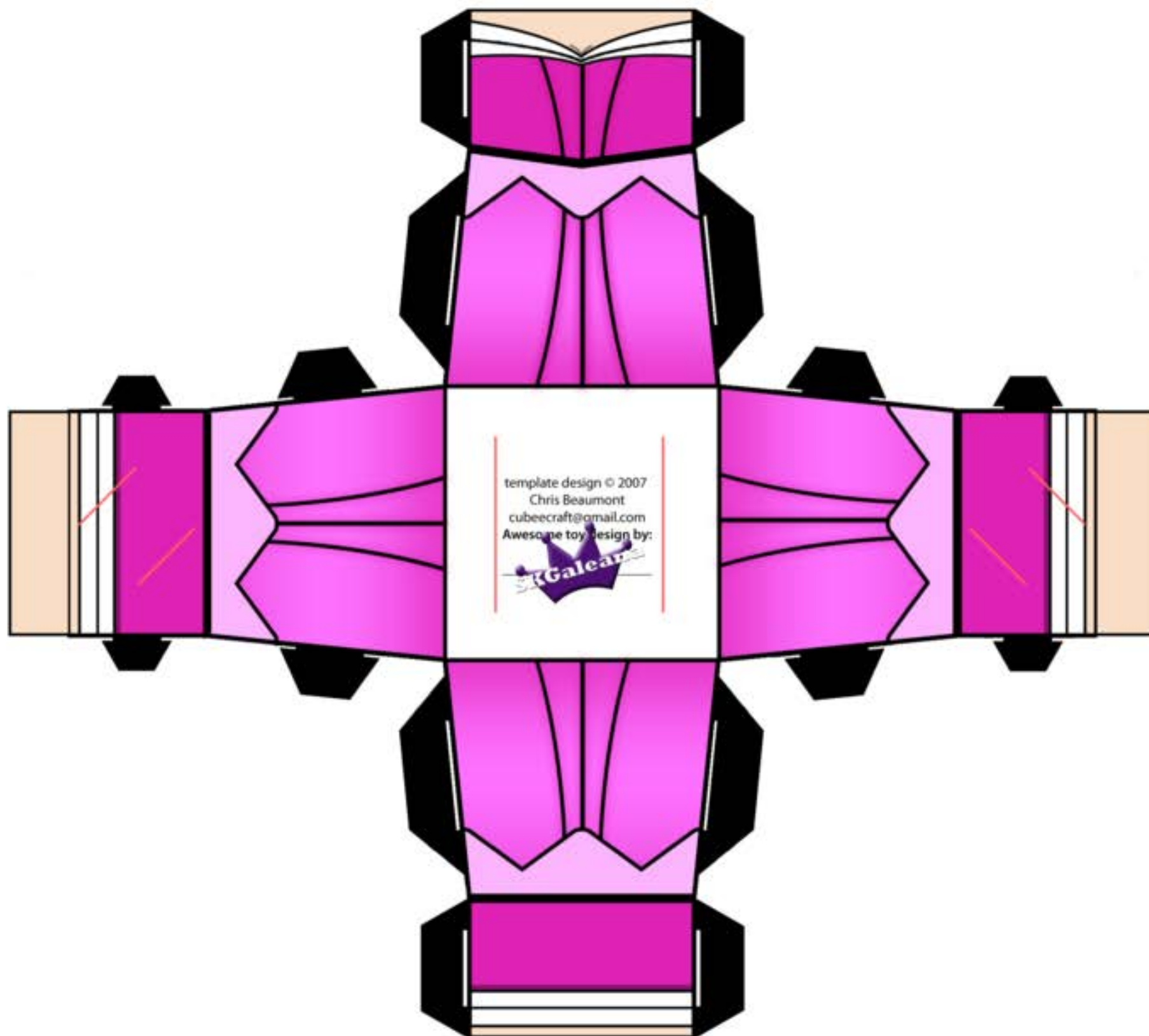
© 2007 Universal Studios. All Rights Reserved. Please visit <http://www.universal.com> for more information. The characters and design that are trademarks, service marks, and/or registered trademarks of Universal Studios.

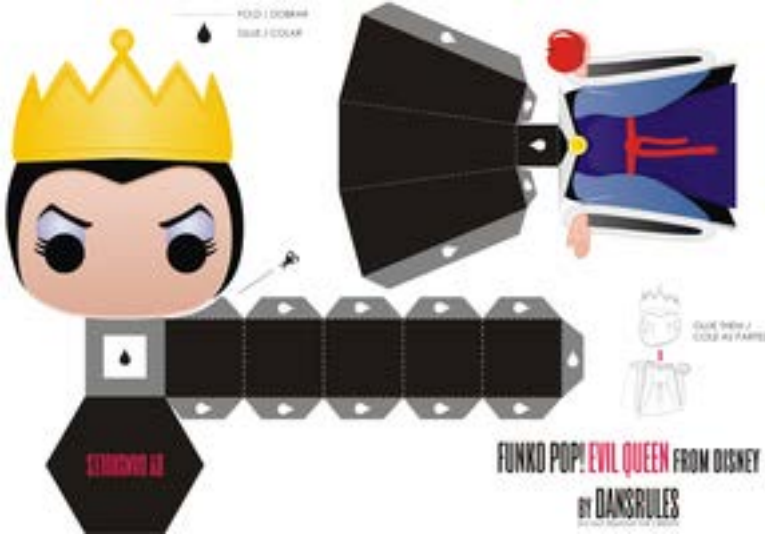


Disney's Princess Aurora

CUBEERCRAFT®

Artist: _____
Website:  _____



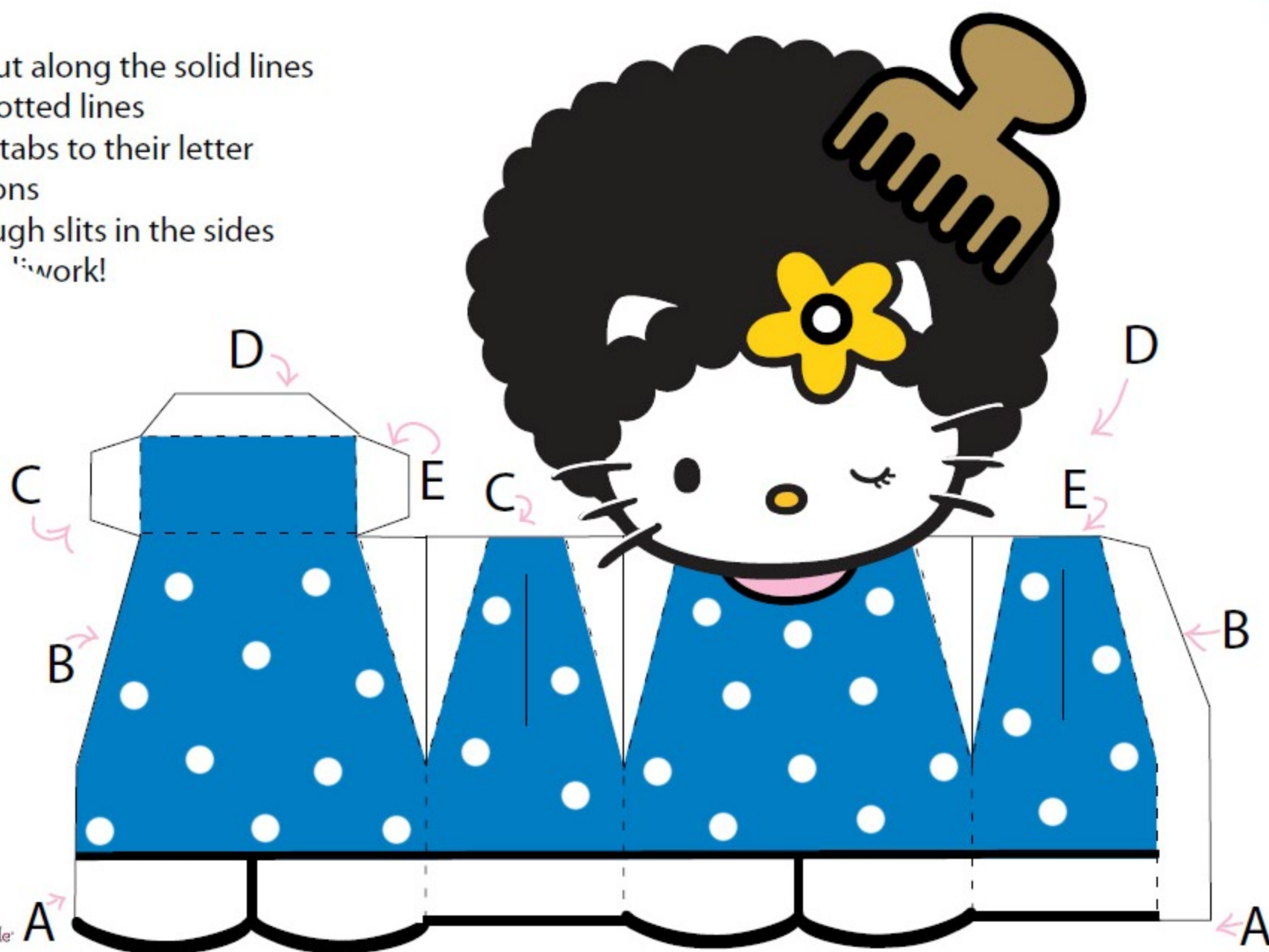


FUNKD POP! EVIL QUEEN FROM DISNEY
BY **DANSRULES**



Instructions:

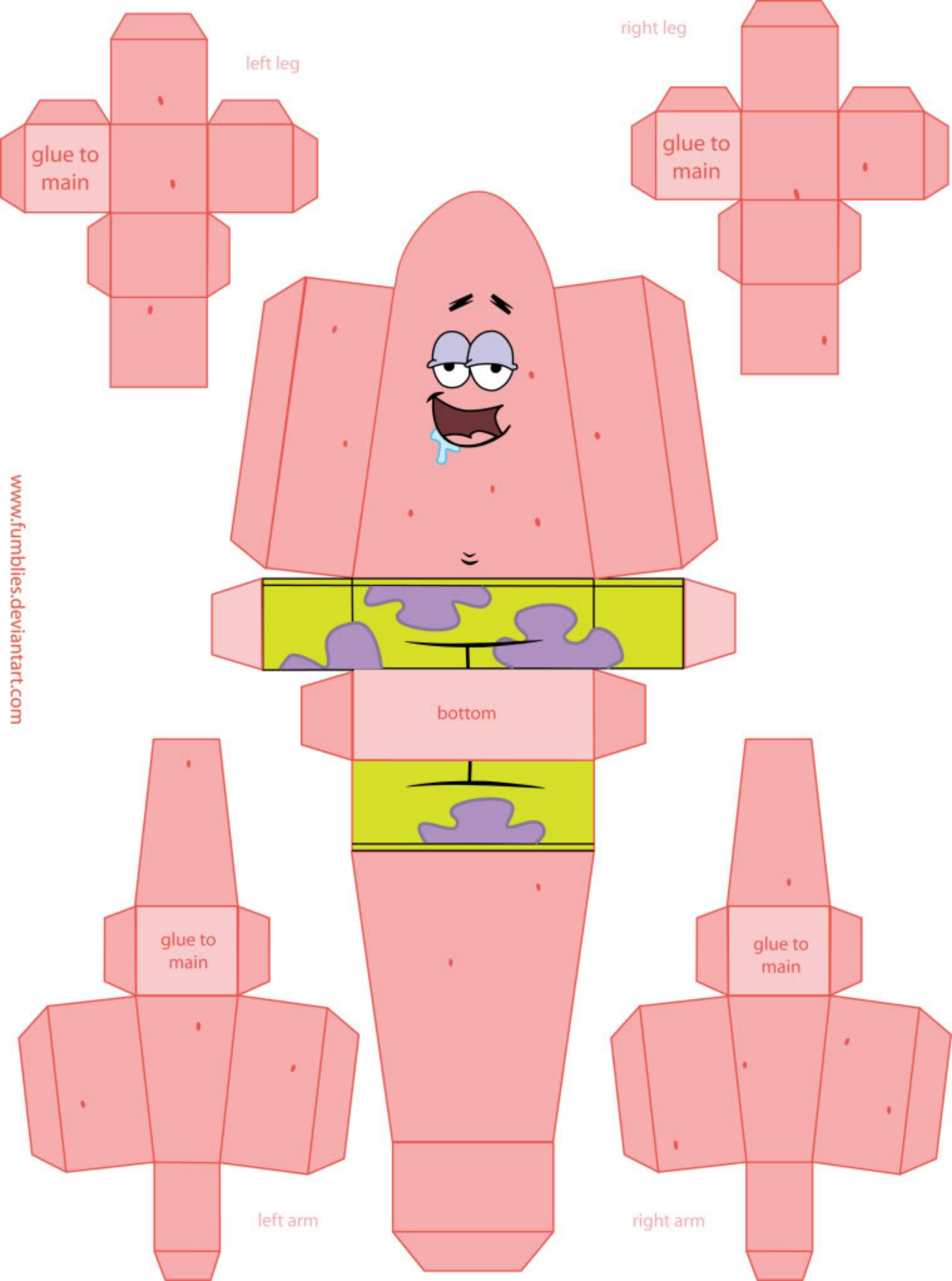
1. Cut Hello Kitty out along the solid lines
2. Fold along the dotted lines
3. Tape or glue the tabs to their letter matching locations
4. Insert arms through slits in the sides
5. Admire your hair work!



MIGHTY
FINE

small gift, big smile
 **Smiling.com**

©1976, 2000 SANRIO CO., LTD.



left leg

right leg

glue to
main

glue to
main

bottom

glue to
main

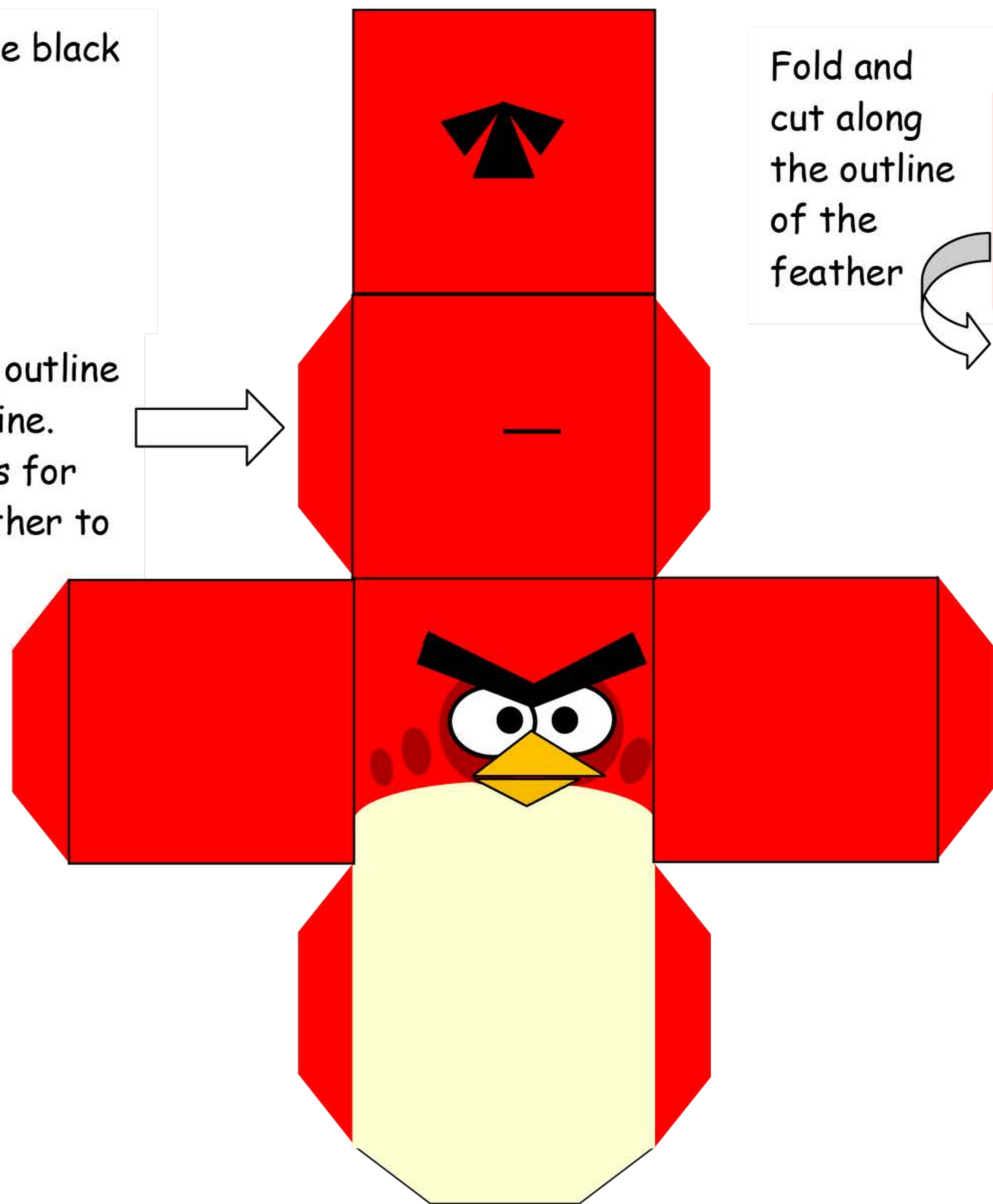
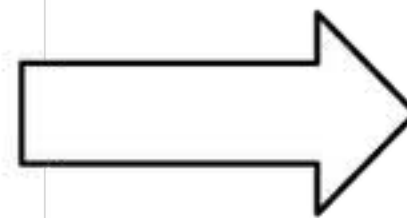
glue to
main

left arm

right arm

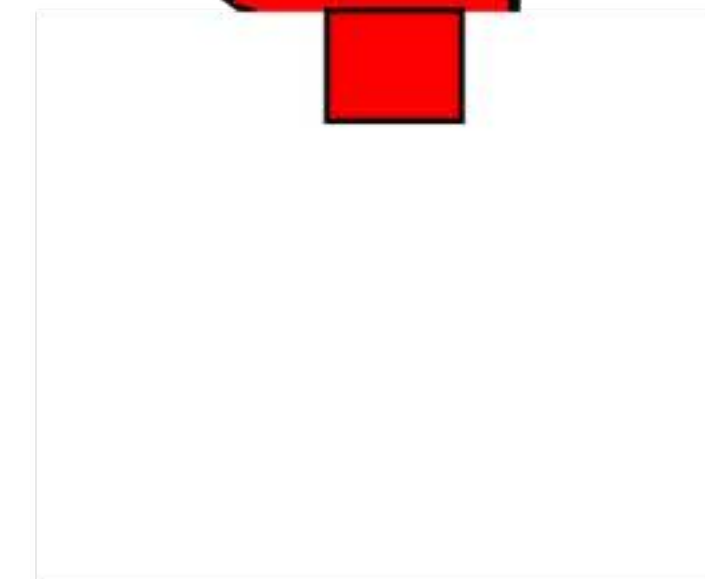
Fold along the black lines

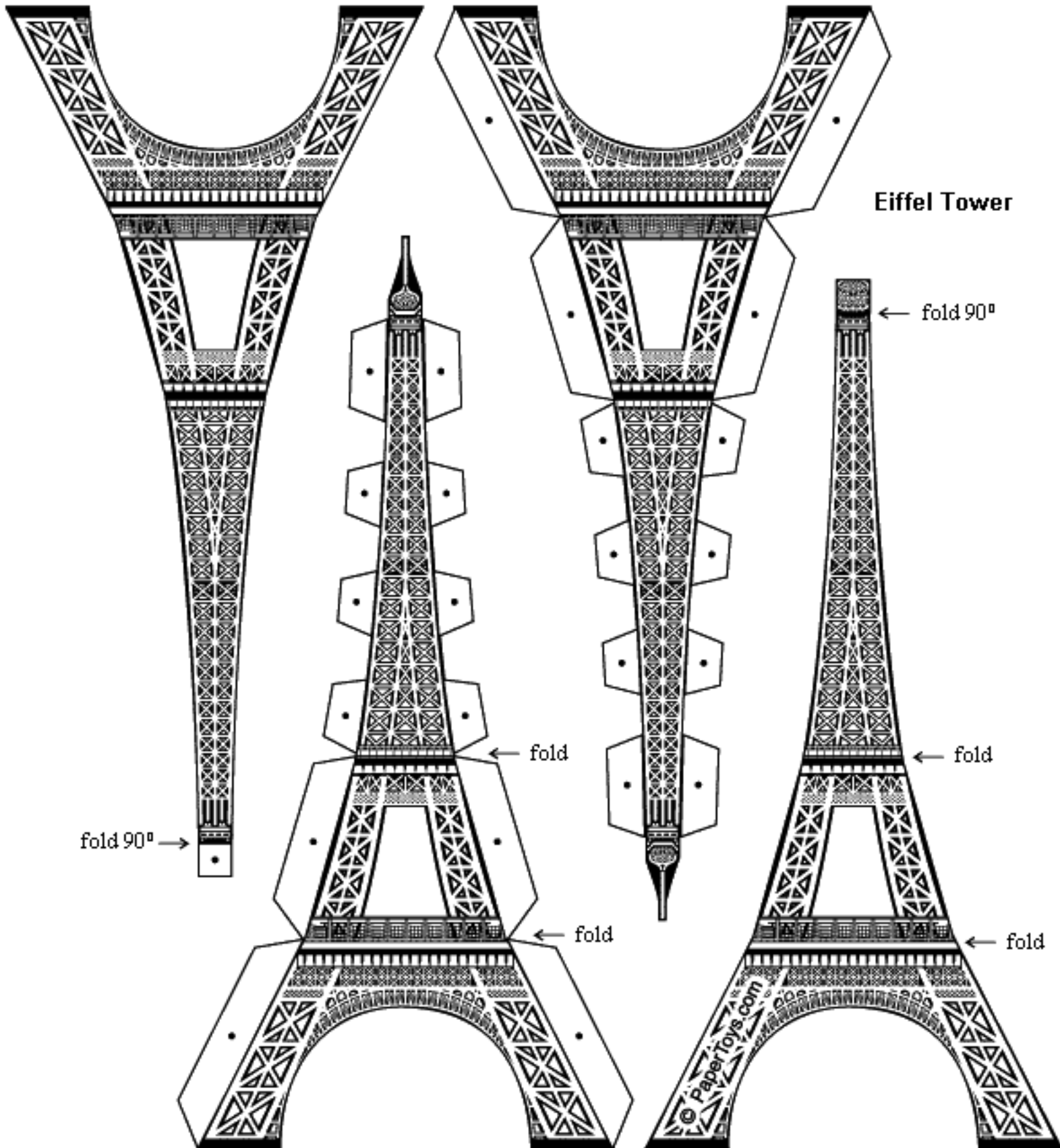
Cut along the outline of the black line.
The opening is for the head feather to go in



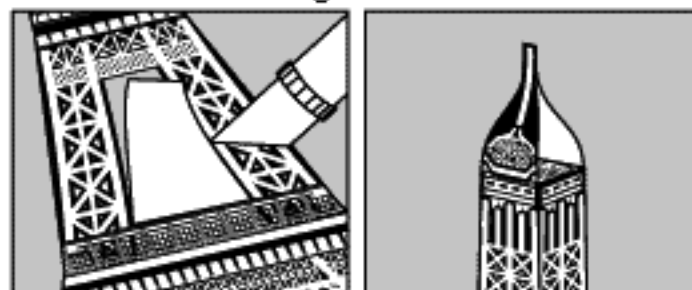
Fold and cut along the outline of the feather

Head Feather



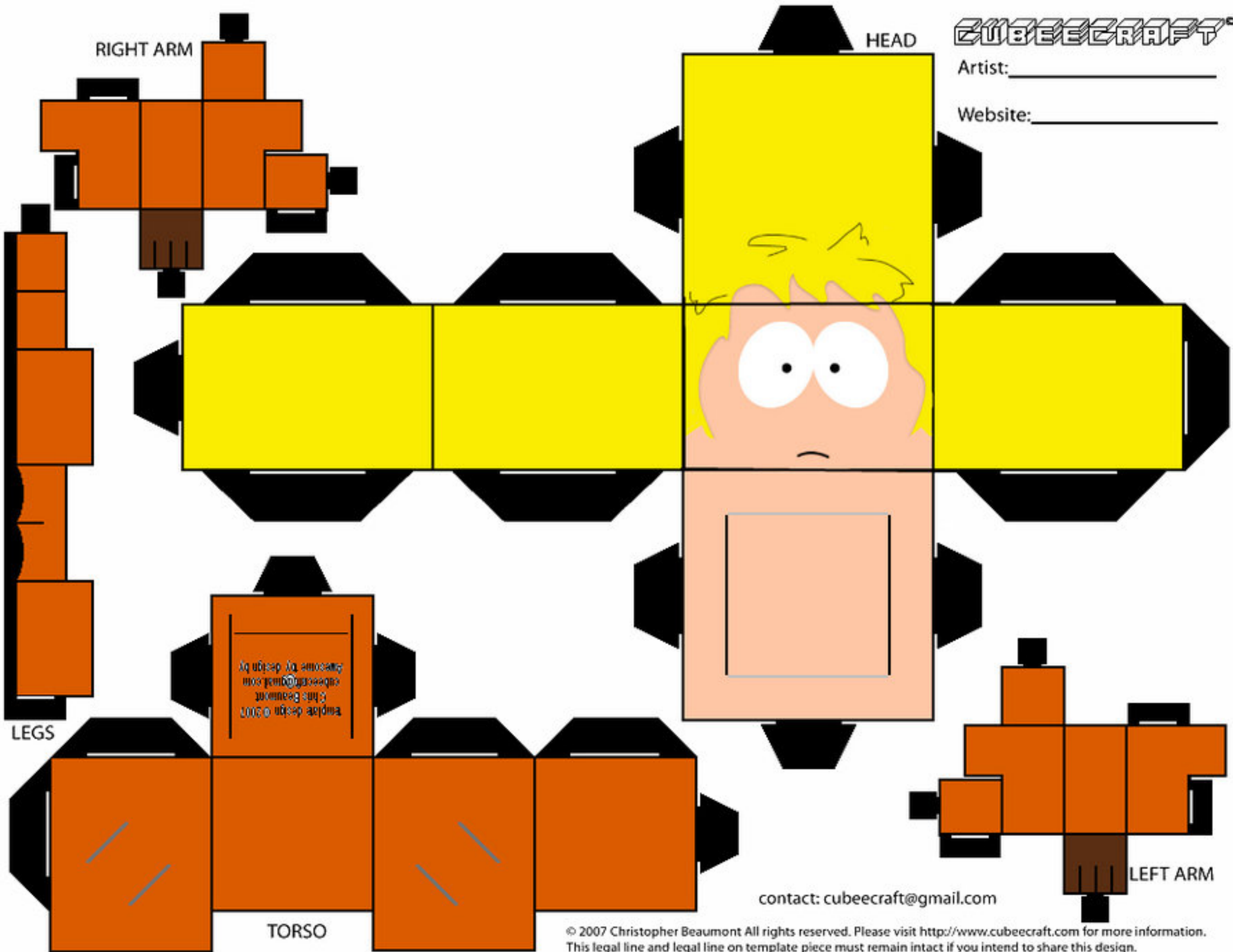


Folding instructions



Artist: _____

Website: _____







Disney's Tangled Rapunzel

