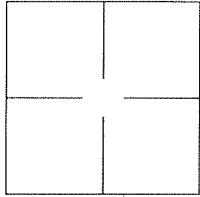


CORNER RECORD

Agency Index BK 138 Pg 74Document Number CR 14539City of UNINCORPORATED AREACounty of ALAMEDA, CaliforniaBrief Legal Description ALAMEDA COUNTY MONUMENT UZ42A4

CORNER TYPE

Government Corner ☐ Control ☐
Meander ☐ Property ☐
Rancho ☐ Other ☒

Date of Survey 2020-07-20

COORDINATES (Optional)

N. _____ E. _____

Elevation _____

Units Metric ☐ U.S. Survey Foot ☒

Horizontal Datum _____

Zone _____ Epoch Date _____

Vertical Datum: _____

☐ Complies with Public Resources Code §§8801-8819☐ Complies with Public Resources Code §§8890-8902PLS Act Ref.: ☐ 8765(d) ☒ 8771 ☐ 8773

Other: _____

Corner/
Monument: ☒ Left as found ☐ Established ☐ Rebuilt ☒ Pre-Construction
☐ Found and tagged ☐ Reestablished ☒ Referenced ☐ Post-Construction

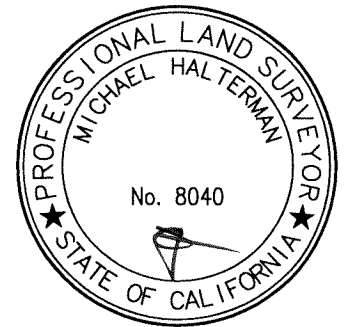
Narrative of corner identified and monument as found and set or reset:

☒ See sheet #2 for description(s):

ALAMEDA COUNTY MONUMENT UZ42A4

SURVEYOR'S STATEMENT

This Corner Record was prepared by me or under my direction in conformance with
the Professional Land Surveyor's Act on 16 June, 2021.

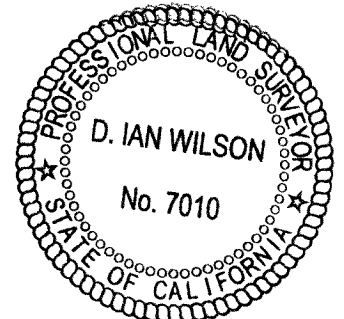
Signed [Signature] P.L.S. or R.C.E. No.: 8040

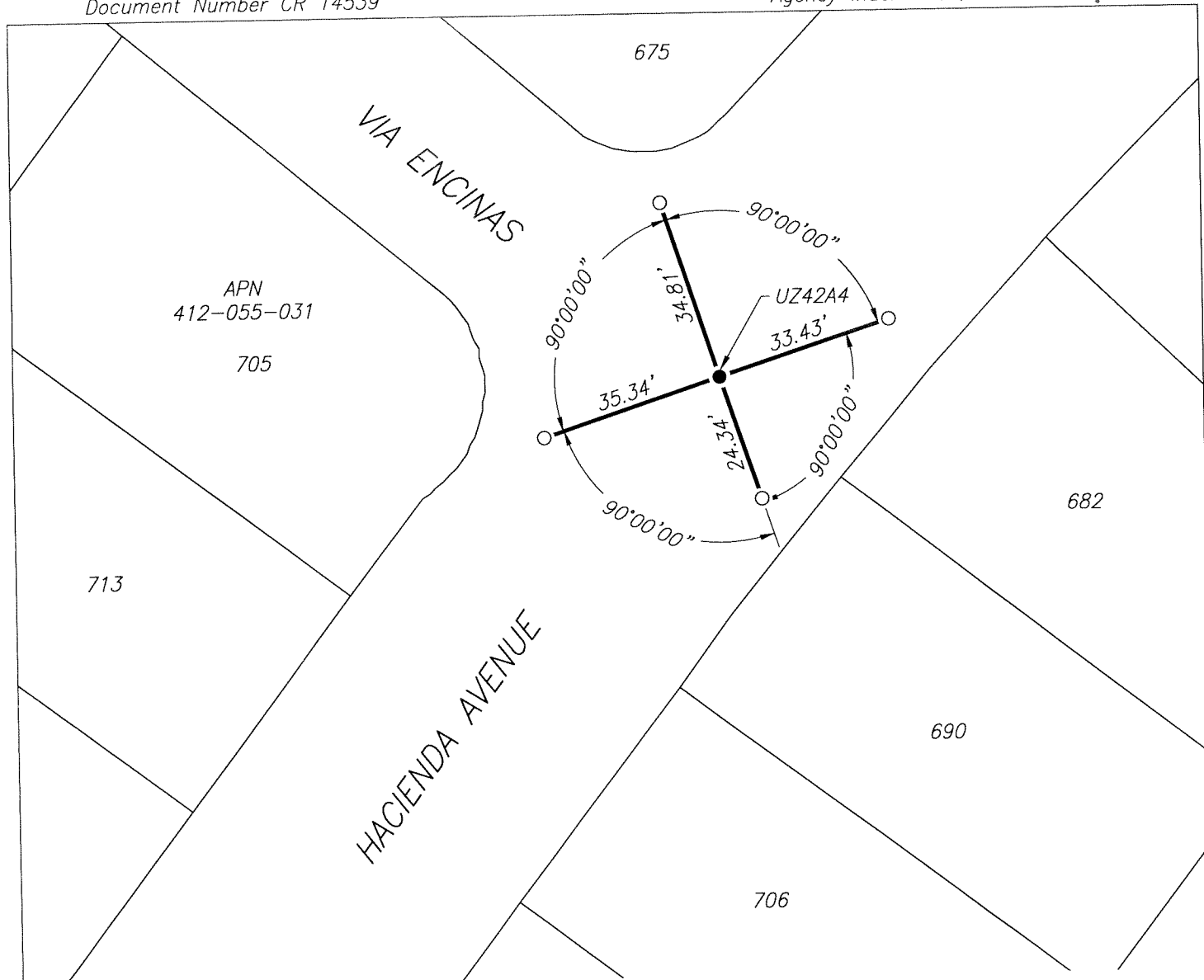
COUNTY SURVEYOR'S STATEMENT

This Corner Record was received _____, _____ and examined
and filed JUL 01 2021.

Signed D. Ian Wilson P.L.S. or R.C.E. No.: 7010Title ALAMEDA COUNTY SURVEYOR

County Surveyor's Comment _____





LEGEND

- FOUND 2.5" BRASS DISK IN CONCRETE, IN MONUMENT WELL, WITH PUNCH, STAMPED "ALAMEDA COUNTY SURVEYOR", PER (A)

- SET CUT CROSS IN CONCRETE

690 REFERENCE STREET ADDRESS

APN ASSESSORS PARCEL NUMBER

AA##A# ALAMEDA COUNTY MONUMENT ID

REFERENCES

- (A) CORNER RECORD 11222 FILED FOR RECORD ON JUNE 18, 2018, IN BOOK 108 OF CORNER RECORDS, AT PAGE 25, ALAMEDA COUNTY RECORDS

SCALE

1" = 30'