



PANDA RESTAURANT GROUP INC.
1683 Walnut Grove Ave.
Rosemead, California
91770
Telephone: 626.799.9898
Facsimile: 626.372.8288

All ideas, designs, arrangement and plans indicated, or represented by this drawing are the property of Panda Express Inc. and were created for use on this specific project. None of these ideas, designs, arrangements or plans may be used by or disclosed to any person, firm, or corporation without the written permission of Panda Express Inc.

REVISIONS:	

ISSUE DATE:	
1	100% SUBMITTAL

CHECKED BY:
DRAWN BY: STAFF

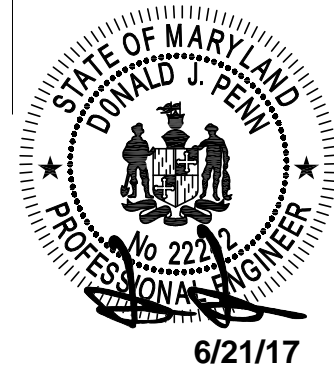
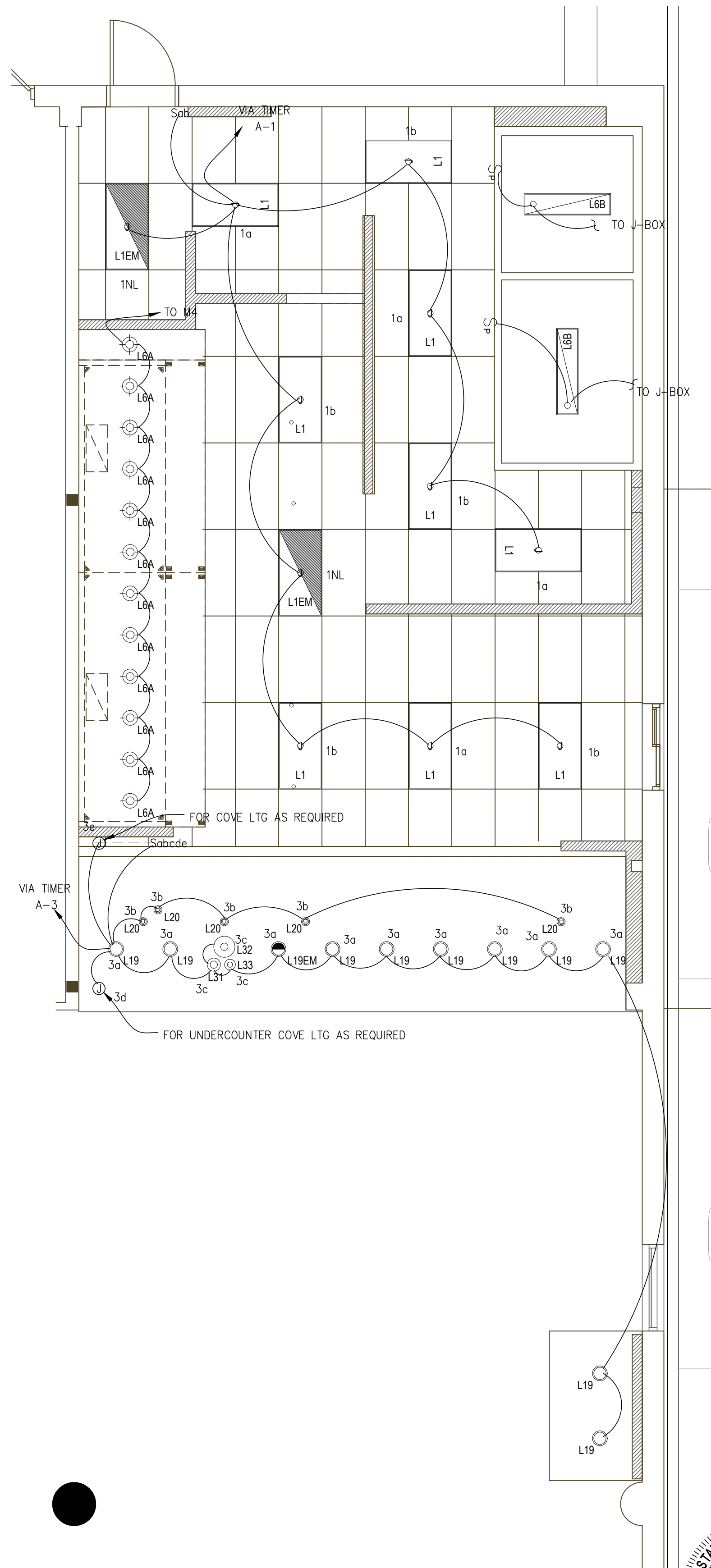
PANDA PROJECT #: B1-17-D5167
ARCH PROJECT #:

d p c e
don penn ■ consulting engineer
1301 SOLANA BLVD., BLDG. 1,
SUITE 1420
WESTLAKE, TEXAS 76262
Phone: 817-410-2858
Fax: 817-251-8411

Professional Certification
I hereby certify that these documents were prepared or approved by me, and that I am a duly licensed professional engineer under the laws of the State of Maryland. License number 22242 , Expiration Date: 02/03/19

PANDA EXPRESS
NAS PAX RIVER
PAX RIVER NAVY BASE
PATUXENT RIVER, MD

E-101
LIGHTING FLOOR PLAN



- ALL FLUORESCENT FIXTURES SHALL HAVE ELECTRONIC BALLASTS WITH 20% OR LESS THD.
- CONTRACTOR SHALL PROVIDE ALL REQUIRED HARDWARES, BRACKETS, ETC. FOR A COMPLETE INSTALLATION.
- ALL LIGHTING FIXTURES SHALL BE SUPPORTED PER N.E.C. 410-16(C). SEE DETAIL, SHEET 4 / E-4.00.
- CONTRACTOR SHALL INSTALL ALL LIGHTING FIXTURES INCLUDING OWNER-FURNISHED FIXTURES.
- ALL FIXTURE BALLASTS SHALL BE U.L. LISTED.
- G.C. SHALL INSTALL OWNER SUPPLIED LED & CUT TO PROPER LENGTH
- WHEN WORKING IN JURISDICTIONS WHICH HAVE ADOPTED THE 2008 NEC OR LATER, ALL MULTI-WIRE BRANCH CIRCUITS TO HAVE SEPARATE NEUTRALS TO MEET THE REQUIREMENTS OF 2008 NEC 210.4(B).
- ALL FLUORESCENT FIXTURES SHALL HAVE INTEGRAL DISCONNECTING MEANS PER 2005 NEC 410.73(G) and 2008 NEC 410.130(G)(1).
- ALL CIRCUITRY SHOWN WITHOUT TICKS SHALL HAVE (2) WIRES PLUS EQUIPMENT GROUNDING CONDUCTOR.
- 'N.L.' DESIGNATION INDICATES NIGHT LIGHT ON UNSWITCHED CIRCUIT.
- EGRESS ILLUMINATION LEVEL WILL MEET OR EXCEED PROVISIONS OF CBC 1006.2.

LIGHTING GENERAL NOTES 2
NOT TO SCALE E-101

LIGHTING FLOOR PLAN 1
Scale: 1/4"=1'-0" E-101

CONSTRUCTION SET - 2017/07/30