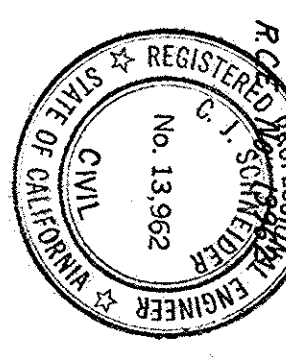


BASIS OF BEARINGS:
The bearing of N 22° 30' 14" W along the East boundary of Tract No. 4779, Landmark Unit No. 2, filed for record in Book 274 of maps of page 17, Santa Clara County Records was taken as the Basis of Bearings shown hereon.

SURVEYOR'S CERTIFICATE:

This map correctly represents a survey made under my direction in conformance with the requirements of the Land Surveyor's Act of the request of Levitt & Sons in August 1971.

Charles J. Schneider
REGISTERED PROFESSIONAL
LAND SURVEYOR
No. 13,962
CIVIL ENGINEER



COUNTY SURVEYOR'S CERTIFICATE:

This map has been examined for conformance with the requirements of the Land Surveyor's Act this 6th day of October, 1971.

James T. Poff
County Surveyor

By *Charles J. Schneider*
Deputy

RECORDER'S CERTIFICATE:

Filed this 7th day of October, 1971 at 3:41 P.M. in Book 291 of Maps of page 13 at the request of Charles J. Schneider.

File No. 4110031, Fee \$5.40

George E. Fowles, County Recorder
By *Charles J. Schneider*
Deputy

- LEGEND:**
- Indicates found survey monument (3/4" Iron Pipe)
 - Indicates found survey monument (Std City of San Jose Mon)
 - Indicates set 3/4" Iron Pipe (survey mon)
 - Δ Indicates angle point

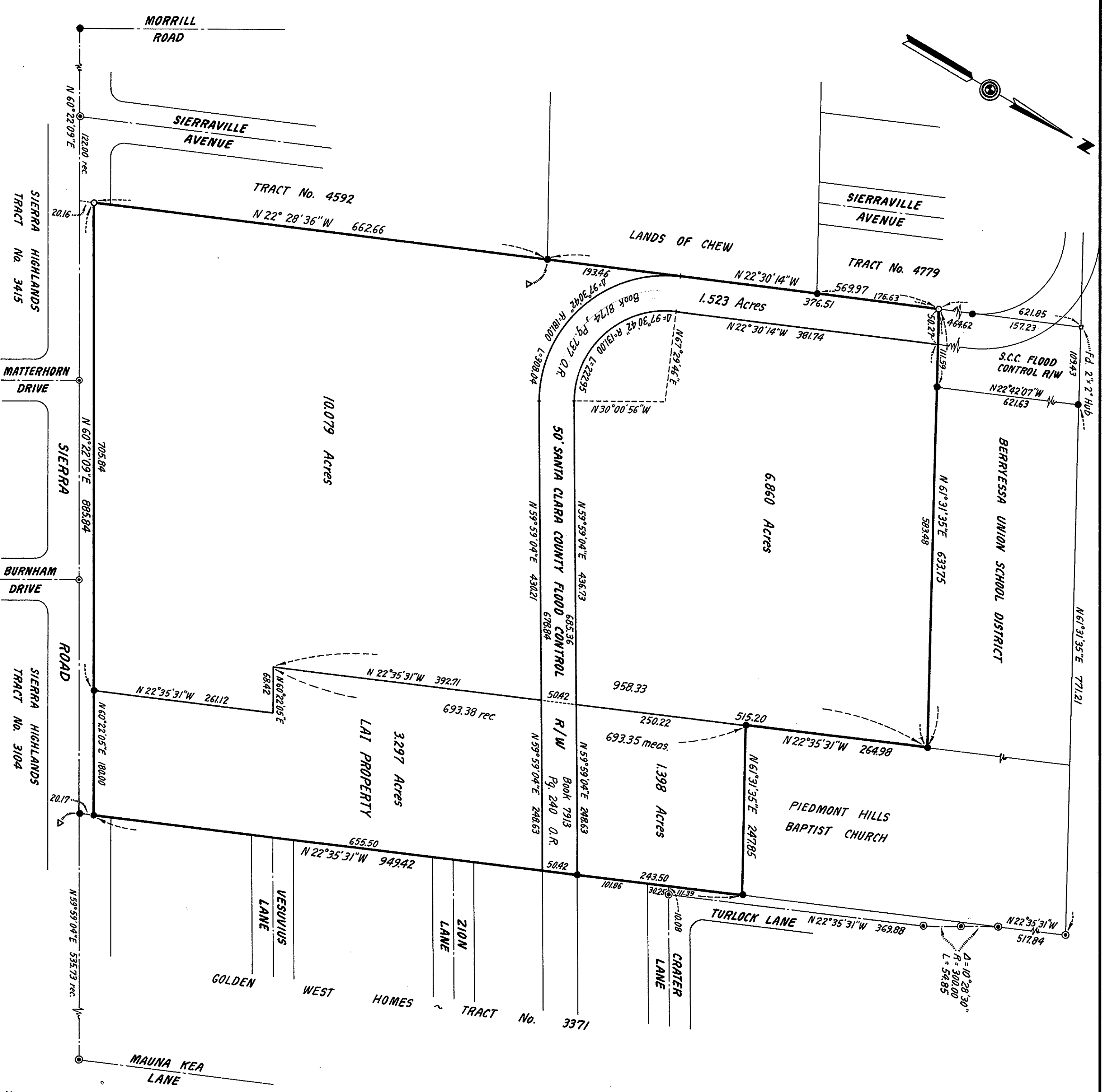
RECORD OF SURVEY

TUSO - LAI PROPERTY

BEING A PORTION OF PUEBLO TRACT No. 1 SAN JOSE CITY LAND
AND LYING ENTIRELY WITHIN THE CITY OF
SAN JOSE, CALIFORNIA



Bay Area
ENGINEERS, ARCHITECTS, PLANNERS, SAN JOSE, SANTA CLARA COUNTY, CAL.
SEPTEMBER, 1971



SCALE: 1" = 100'