

SHEET 4 OF 4 SHEETS
NO SCALE

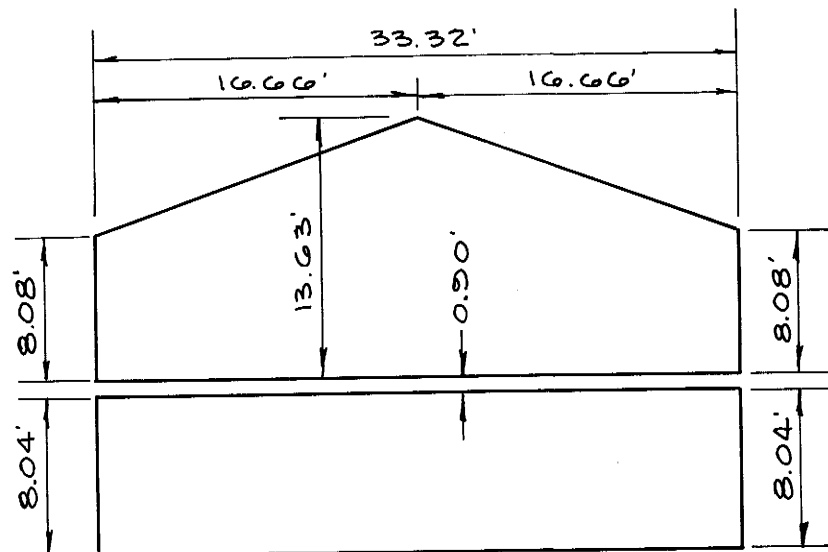
CHATEAU BLANC N° 2

IN UNINCORPORATED TERRITORY OF MONO COUNTY, CALIFORNIA

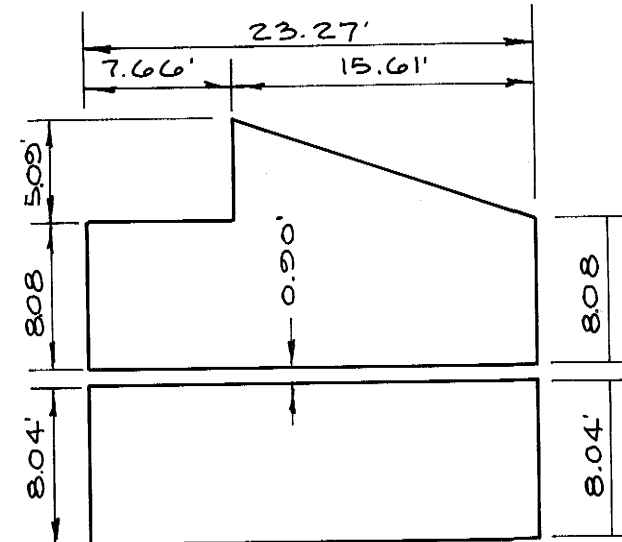
JULY, 1969
13 LOTS

GERALD F. OLDENBURG, LS 3246
1.349 ACRES

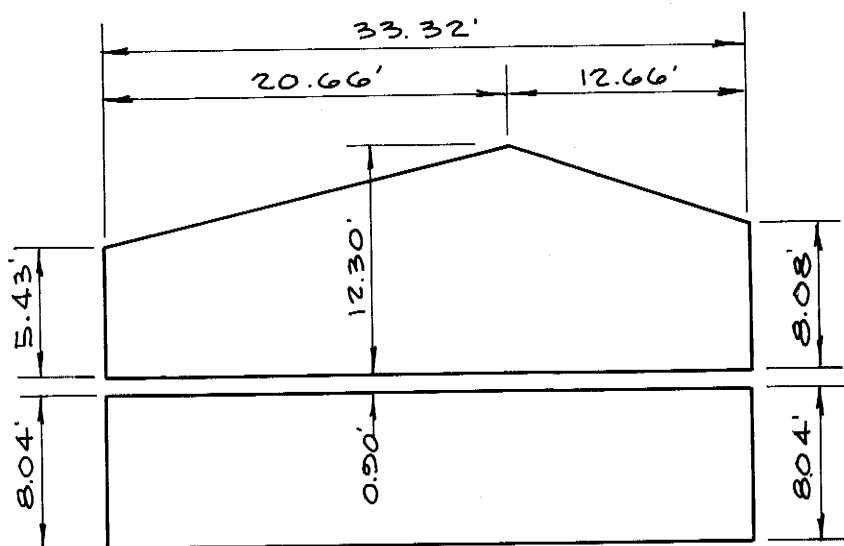
FOR CONDOMINIUM PURPOSES



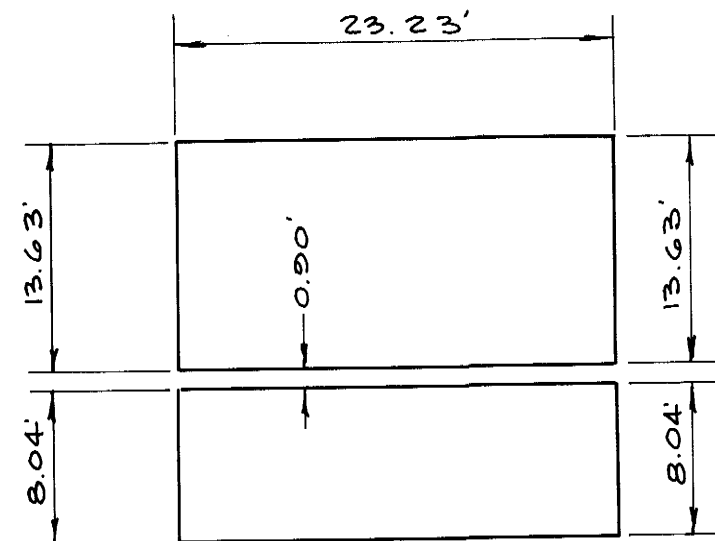
TYPICAL SECTION A-A



TYPICAL SECTION C-C



TYPICAL SECTION B-B



TYPICAL SECTION D-D

NOTES:

1. SECTION A-A IS TYPICAL FOR PARCELS 2,3,4,7,8,9,10 & 11.
2. SECTION B-B IS TYPICAL FOR PARCELS 1,5,6 & 12.
3. SECTION C-C IS TYPICAL FOR PARCELS 1,5,6 & 12.
4. SECTION D-D IS TYPICAL FOR PARCELS 2,3,4,7,8,9,10 & 11.

NOTE:

SEE SHEET N° 2 FOR BASIS OF BEARINGS, MONUMENT
NOTE AND GENERAL NOTES.