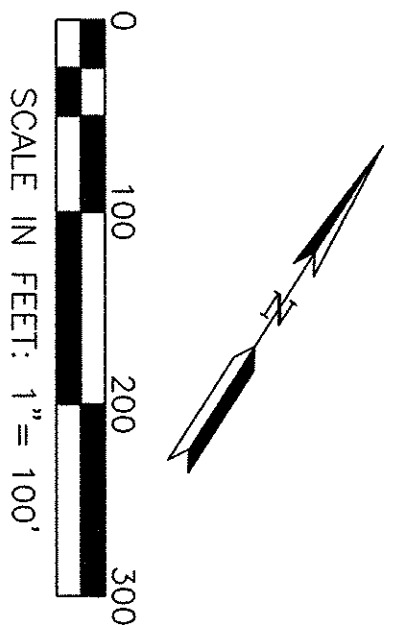


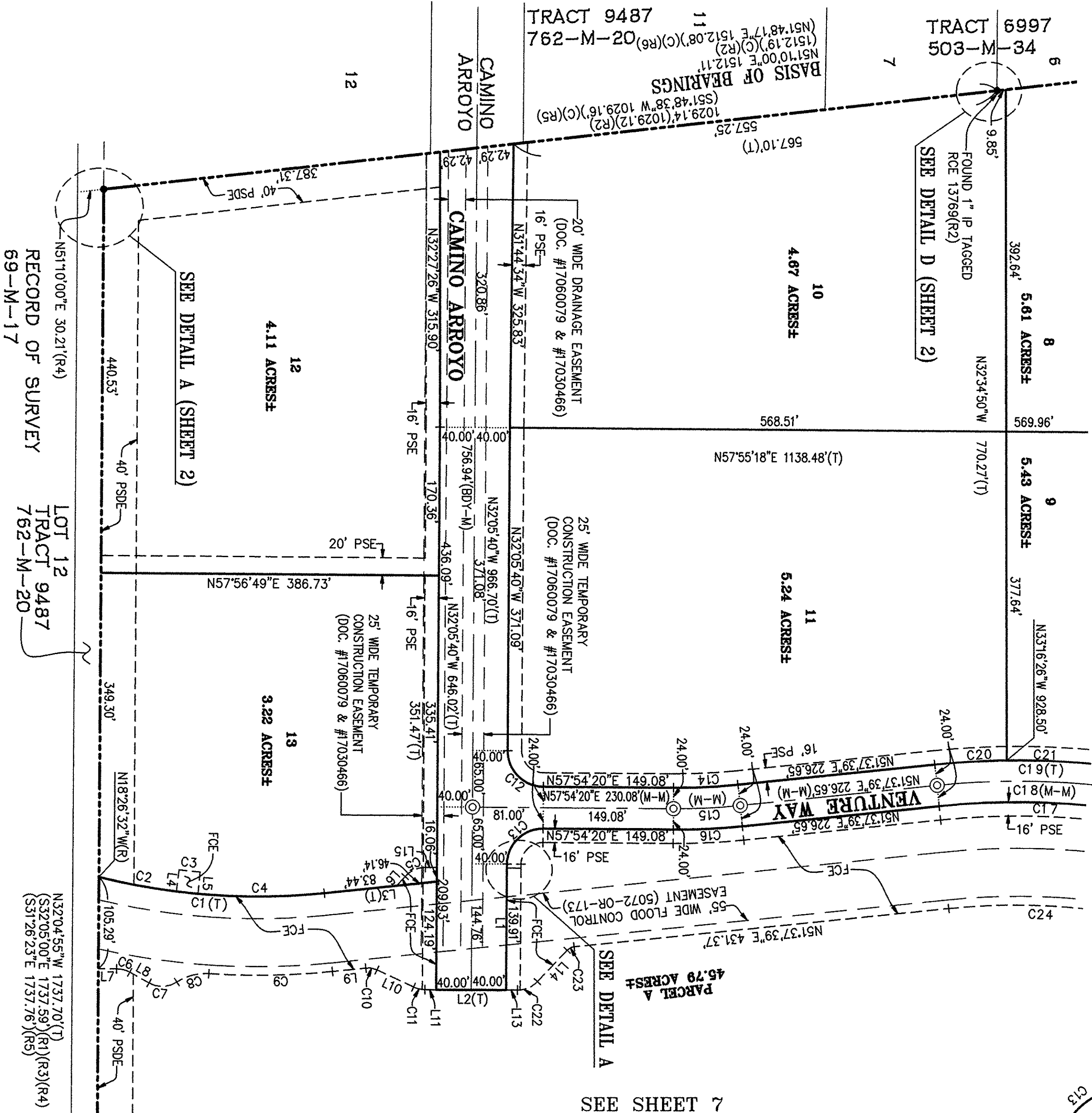
LINE	BEARING	DIST
L1	N32°05'40"W	144.59'
L2	N57°39'22"E	80.00'
L3	N51°37'39"E	129.58'
L4	N25°21'22"W	25.00'
L5	N27°16'27"W	25.00'
L6	N09°11'45"E	14.06'
L7	N57°55'05"E	20.87'
L8	N86°36'43"E	25.32'
L9	N51°37'39"E	38.48'
L10	N82°38'55"E	46.26'
L11	N57°54'20"E	13.00'
L12	N57°54'22"E	16.00'
L13	N57°54'20"E	13.00'
L14	N10°53'52"E	49.50'
L15	N57°54'22"E	13.29'

CURVE	LENGTH	RADIUS	DELTA
C1	259.84'	747.00'	193°55'49"
C2	90.14'	747.00'	65°4'50"
C3	24.17'	722.00'	1°55'04"
C4	144.70'	747.00'	110°5'54"
C5	26.35'	31.00'	48°42'35"
C6	15.52'	31.00'	128°41'38"
C7	33.62'	31.00'	62°08'47"
C8	38.59'	60.00'	36°50'48"
C9	141.56'	837.50'	9°41'05"
C10	12.99'	24.00'	31°01'16"
C11	13.39'	31.00'	24°44'35"
C12	64.40'	41.00'	90°00'00"
C13	64.40'	41.00'	90°00'00"
C14	74.07'	676.00'	6°16'41"
C15	76.70'	700.00'	6°16'41"
C16	79.33'	724.00'	6°16'41"
C17	373.18'	880.50'	24°17'01"
C18	383.35'	904.50'	24°17'01"
C19	393.53'	928.50'	24°17'01"
C20	82.62'	928.50'	5°05'54"
C21	310.90'	928.50'	19°11'06"
C22	25.43'	31.00'	47°00'28"
C23	9.24'	13.00'	40°43'47"
C24	366.08'	750.00'	27°58'00"



SEE SHEET 5

SEE SHEET 7



# LEGEND

- BOUNDARY LINE (DISTINCTIVE BORDER)
- EXISTING LOT LINE
- LOT LINE
- MONUMENT LINE
- NEW EASEMENT LINE
- EXISTING EASEMENT LINE
- TIE LINE
- SET BRASS DISK IN MONUMENT
- WELL WITH TAG RCE 25281
- FOUND MONUMENT AS NOTED
- IRON PIPE
- DOCUMENT
- IP
- DOC.
- PSE
- SDE
- FCE
- PSDE
- SNF
- SWE
- (M-M)
- (BDY-M)
- (T)
- (R)
- (C)
- ( )
- MONUMENT TO MONUMENT
- BOUNDARY TO MONUMENT
- TOTAL DIMENSION
- RADIAL BEARING
- CALCULATED DIMENSION
- RECORD DATA

## BASIS OF BEARINGS:

THE BEARING OF N51°10'00"E ALONG THE SOUTHERN LINES OF LOTS 5, 6, AND 7, AS SHOWN ON THE MAP ENTITLED "TRACT 6997", WHICH WAS FILED FOR RECORD IN BOOK 503 OF MAPS, AT PAGE 33, RECORDS OF SANTA CLARA COUNTY, WAS TAKEN AS THE BASIS OF BEARINGS FOR THIS MAP.

## REFERENCES:

- (R1) PARCEL MAP - 686-M-44
- (R2) TRACT 6997 - 503-M-33
- (R3) PARCEL MAP - 607-M-48
- (R4) PARCEL MAP - 613-M-29
- (R5) TRACT 9487 - 762-M-20
- (R6) RECORD OF SURVEY - 757-M-28
- (R7) RECORD OF SURVEY - 69-M-23
- (R8) ELIZABETH H. MARTIN TRACT - "F"-M-31
- (R9) GRANT DEED - DOCUMENT # 16172648

## NOTES:

- ALL MONUMENT TIES ARE 90° OR RADIAL TO MONUMENT LINES UNLESS OTHERWISE NOTED.
- DISTANCES AND DIMENSIONS ARE SHOWN IN FEET AND DECIMALS THEREOF.

# TRACT 9570 MCCARTHY BUSINESS PARK

CITY OF GILROY  
SANTA CLARA COUNTY, CALIFORNIA

A SUBDIVISION OF "PARCEL ONE" AND "PARCEL SIX",  
AS DESCRIBED IN THE DEED RECORDED AUGUST 5,  
2003 AS DOCUMENT #17246759, OFFICIAL RECORDS OF  
SANTA CLARA COUNTY, CALIFORNIA

Prepared By:  
**RUGGERI-JENSEN-AZAR & ASSOCIATES**  
8035 Camino Arroyo, Gilroy, CA 95020

JULY 2006

JOB #004068

SHEET 6 OF 7 SHEETS