

Falcon 4.0: BMS 4.34U4

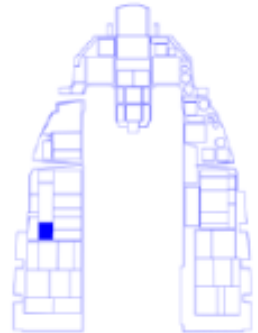
Ramp Start Procedure

Prior to launching the mission note the flight order in the briefing screen. The datalink flight ID number will start with 1 for the first flight listed, 2 for 2nd flight listed e.t.c

1. Canopy – Close and lock

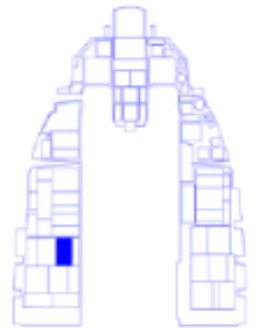
Panel: **ELEC**

2. Set switch to MAIN PWR



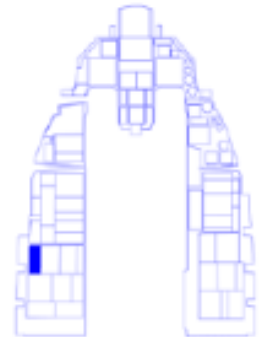
Panel: **EXT LIGHTING**

3. FLASH STEADY switch - STEADY
4. WING/TAIL switch – BRT
5. FUSELAGE switch - BRT
6. MASTER light switch - NORM

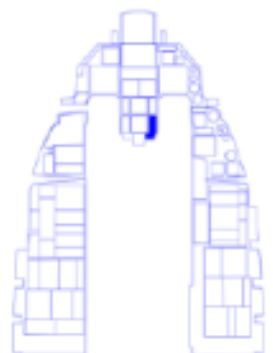


Panel: **FUEL**

7. ENGE FEED to NORM

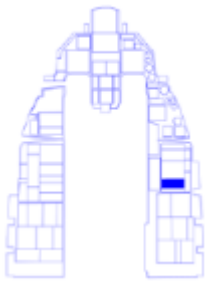


8. FUEL QTY SEL – Set as required

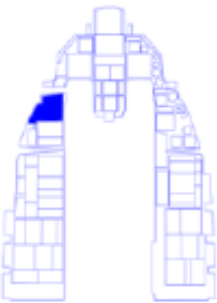


Panel: **AIR COND**

9. Set AIR SOURCE to NORM
If hidden, 1x left click

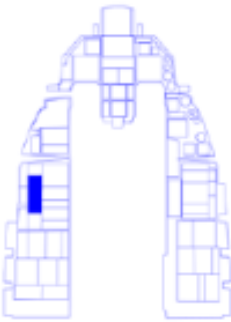


- Panel: **LEFT AUXILIARY**
10. Set PARKING BRAKE on

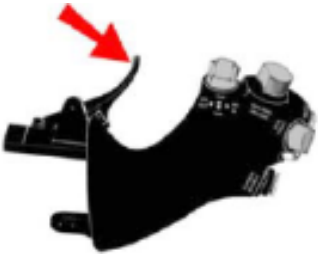


11. Set throttle to idle

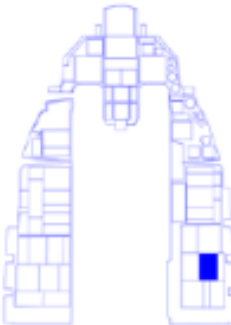
- Panel: **ENG & JET START**
12. Set JFS to START2
13. Watch RMP. When it reaches 20%,
move throttle to 50%



14. Throttle idle detent. (Alt+i) Return throttle to idle.
RPM should increase to 70%

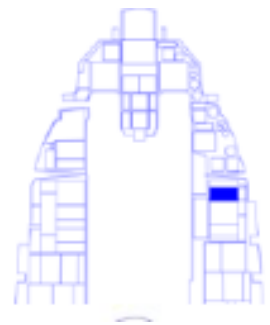


- Panel: **AVIONICS POWER**
15. MMC switch - MMC
16. ST STA switch – ST STA
17. MFD switch – MFD
18. UFC switch – UFC
19. GPS switch – GPS
20. DL switch - DL
21. INS knob - ALIGN NORM
22. Turn on Oxygen (Next to
Avionics Power Panel)



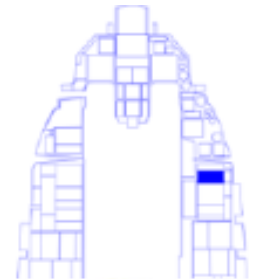
Panel: **SENSR PWR**

23. Turn on LEFT HDPT
24. Turn on RIGHT HDPT
25. FCR switch – FCR
- 26 RDR ALT switch - STBY

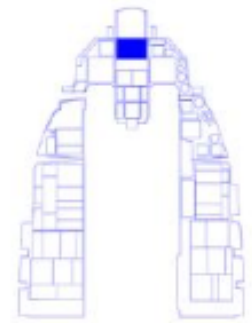


Panel: **HUD**

27. Scales switch – VV/VAH
28. DEPR RET switch – STBY
29. ALT switch - RADAR

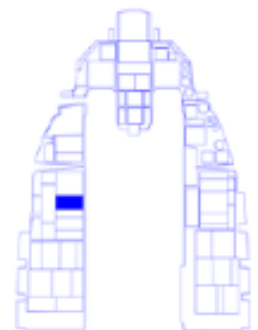


30. Turn on HUD using SYM and adjust brightness



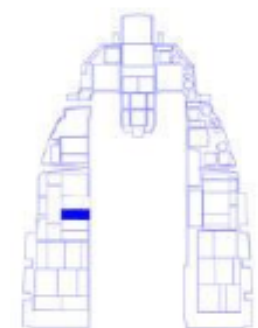
Panel: **AUDIO1**

31. COMM 1 power knob – As Reqd, Suggest 50%
32. COMM 2 power knob – As Reqd, Suggest 50%
33. MSL knob – Fully CW
34. THREAT knob – Fully CW



Panel: **AUDIO 2**

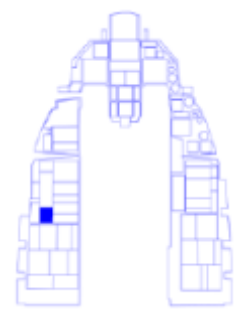
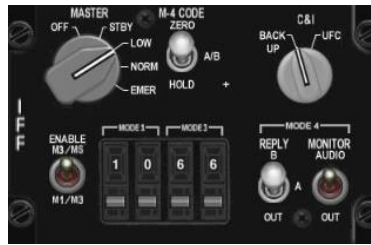
35. ILS Knob – Fully Clockwise



Panel: **IFF**

36. Put in knob in Standby

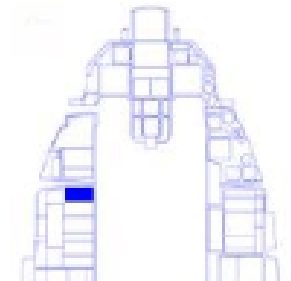
37. CNI knob - UFC



Panel: **BACKUP UHF PANEL**

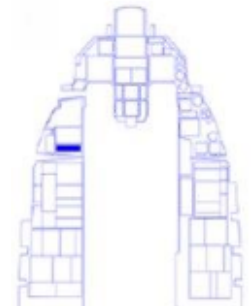
38. FUNCTION knob - BOTH

39. Set to default Channel as set in Data Transfer Cartridge



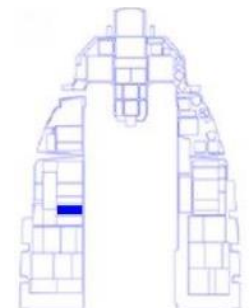
Panel: **HMCS**

40. Set Brightness (Below EWMS left ¼ panel)



Panel: **ECM PANEL**

41. ECM power switch- OPR. (the top left toggle switch)



Panel: **CMDS**

42. MODE knob – MAN

43. RWR switch – ON

44. JMR switch -ON

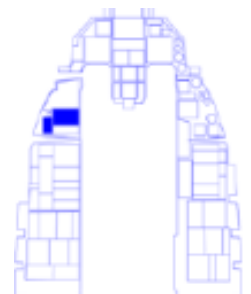
45. CH switch – ON

46. FL switch - ON

47. PRGM knob – As desired

Panel: **THREAT WARNING AUXILIARY**

48. POWER button on



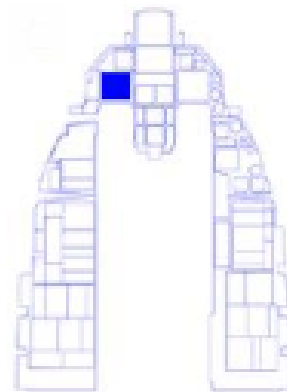
Wait for bit test to complete on left MFD before continuing

Panel: **LEFT MFD – LOAD DTE**

- 49. MFD – FCR OSB Press
- 50. MFD – DTE OSB Press
- 51. MFD – LOAD OSB Press

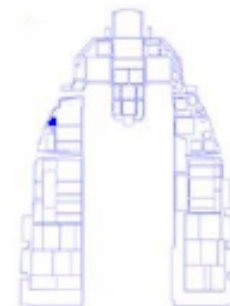
CLEAR IFF AVIONICS FAULT

- 52. MFD – FCR OSB Press
- 53. MFD – TEST OSB Press
- 54. MFD – CLR OSB Press (To clear IFF Fault)

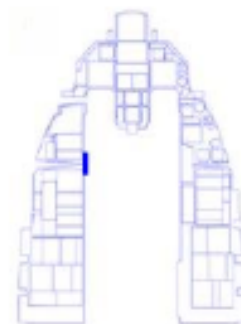


RETURN TO FCR PAGE

- 55. MFD – FCR OSE Press
- Note – BIT test will now re-run



- 56. SET STORES CONFIG switch – CAT I OR CAT III

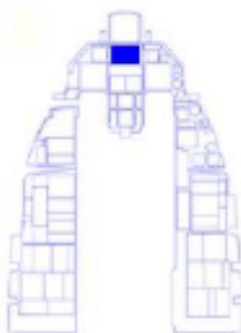


- 57. Arm the ejection seat

Data Link Setup

Panel: **UFC**

- 58. Press A-A

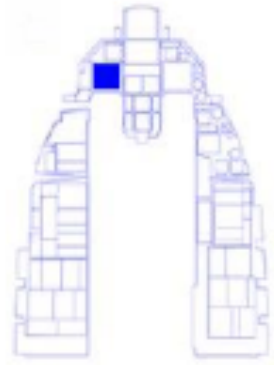


Panel: **LEFT MFD**

59. MFD – OSB 6 Press to Toggle ‘ASSIGN’ , ‘CONT’ ,
‘DMD’ Flight Lead set to ‘CONT’, Rest of flight set to
‘DMD’

60. Flight Lead Only

Hold Comms Switch Left for > 1 sec and release.
(CTRL + o) Ensure ‘CONT’ on let MFD becomes inverted
MFD – FCR OSE Press



All Flight Members

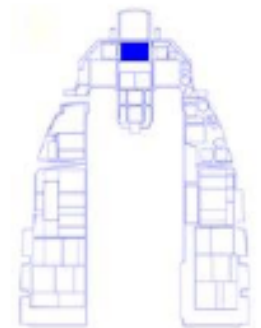
Panel: **UFC**

61. Press A-A to return to ‘NAV’ mode

Enter Datalink ID no’s for other flights

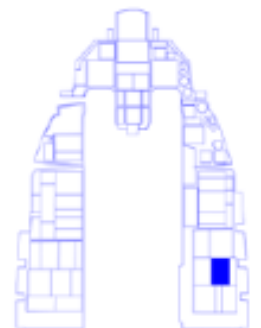
Panel: **UFC**

- 62. Press ‘LIST’ button
- 63. Press ‘ENTER’
- 64. Press Data Command Switch (DCS) to ‘SEQ’
- 65. Press DCS down arrow to navigate cursor
- 66. Using UFC, type in Datalink ID no and
press enter (obtained from briefing screen)
- 67. Press DCS return to exit



Panel: **AVIONICS POWER**

68. After INS is aligned, switch to NAV



Panel: **TWP**

- 69. Press SYS Test button
- 70. Press MSL Launch button
- 71. Press Handoff button

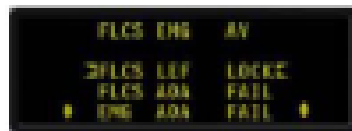


72. Nose wheel steering on

73. F-ACK button – Press. (Left Brow)



74. PFLD – No faults. (Above caution panel, right console)



75. DED – Ensure set to INS page (Displays speed bottom right of DED)

- UFC – LIST > UFC - 6

76. Turn LANDING LIGHTS on



77. Request to remove EPU Pin

78. Request permission to taxi

79. Chocks (ground crew) – Remove. (Tower comms [T,8])

80. Turn PARKING BRAKE OFF