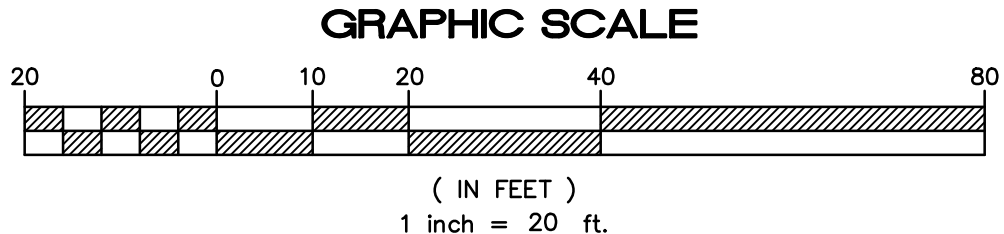
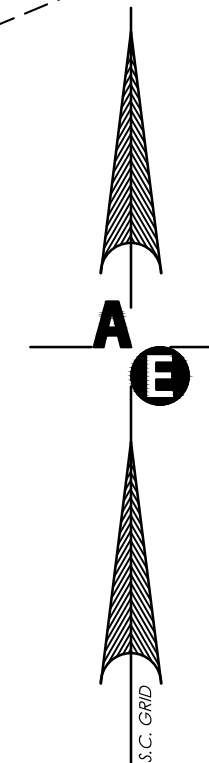
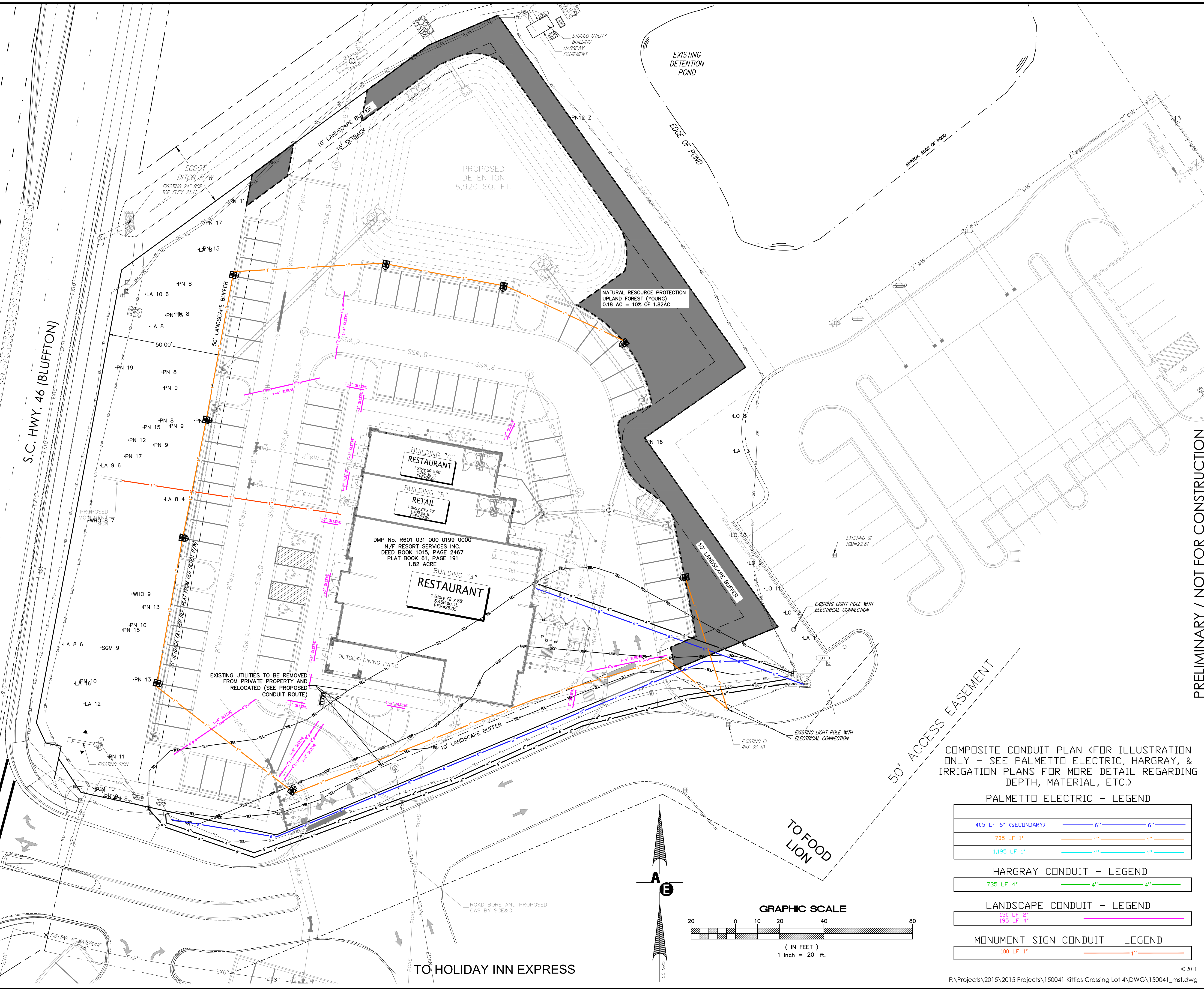


BLUFFTON  
GATEWAY

S.C. HWY. 46 (BLUFFTON)

1250' TO  
CENTRAL  
OF US 276  
S.C. HWY. 46  
BLUFFTON ROAD  
SDOT FILE NO. 07-036065A



COMPOSITE CONDUIT PLAN (FOR ILLUSTRATION ONLY - SEE PALMETTO ELECTRIC, HARGRAY, & IRRIGATION PLANS FOR MORE DETAIL REGARDING DEPTH, MATERIAL, ETC.)

PALMETTO ELECTRIC - LEGEND		
405 LF 6" (SECONDARY)	6"	6"
705 LF 1"	1"	1"
1,195 LF 1"	1"	1"
HARGRAY CONDUIT - LEGEND		
735 LF 4"	4"	4"
LANDSCAPE CONDUIT - LEGEND		
130 LF 2"	2"	2"
195 LF 4"	4"	4"
MONUMENT SIGN CONDUIT - LEGEND		
100 LF 1"	1"	1"

PRELIMINARY / NOT FOR CONSTRUCTION

PLAN REVISIONS		
NO.	DESCRIPTION:	DATE:
1	RELOCATED NRPA PER SRT	12/21/16
2	ROTATE DUMPSTER ENCLOSURE	01/11/17
3	REVISE LS ISLANDS PER DRB	01/12/17
4	REVISED PATIO PER LS ARCH.	03/01/17
5	SHOW RELOC. OF EXISTING UTIL'S	03/15/17
6		
7		
8		

THE DESIGNS AND IDEAS PRESENTED IN THESE DRAWINGS ARE THE COPYRIGHTED PROPERTY OF ANDREWS ENGINEERING CO., INC. THE USE OR REPRODUCTION OF THESE PLANS OR THEIR CONTENT IS STRICTLY PROHIBITED WITHOUT PRIOR WRITTEN CONSENT.

ANDREWS ENGINEERING CO. NO. 12860  
REGISTERED PROFESSIONAL ENGINEER  
CAROLINA  
REGISTERED PROFESSIONAL ENGINEER  
ANDREWS ENGINEERING CO. NO. 00008  
REGISTERED PROFESSIONAL ENGINEER  
CAROLINA

2712 Bull Street Suite A  
Beaufort, SC 29902  
843.375.2223  
Fax: 843.375.2223

**Andrews Engineering**  
& Surveying

Preliminary Site Plan  
For  
Kitties Crossing Lot 4  
S.C. Hwy. 46  
Town of Bluffton  
Beaufort County, SC

Utility Route  
and  
Conduit Plan

Date Drawn: 07/30/15  
Last Revised: 03/16/17  
Drawn By: R. Lyle  
Engineer: S. Andrews

SHEET #:  
**17**

JOB: 150041