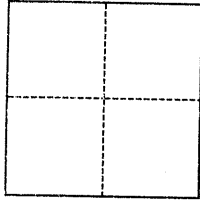


# CORNER RECORD

Agency Index BK 125 PG 86Document Number CR-13163City of EDEN TOWNSHIP County of ALAMEDA, CaliforniaBrief Legal Description MONUMENT AT COLBY ST. AND DERMODY AVE. PER TR 942, 30 MAPS 44

## CORNER TYPE



- ☐ Government Corner ☒ Control  
☐ Meander ☐ Property  
☐ Rancho ☐ Other

Date of Survey August 5, 2019

## COORDINATES (Optional)

N. \_\_\_\_\_ E. \_\_\_\_\_

Elevation \_\_\_\_\_

Units ☐ Metric ☐ U.S. Survey Foot

Horizontal Datum \_\_\_\_\_

Zone \_\_\_\_\_ Epoch Date \_\_\_\_\_

Vertical Datum \_\_\_\_\_

☐ Complies with Public Resources Code §§8801-8819☐ Complies with Public Resources Code §§8890-8902PLS Act Ref.: ☐ 8765(d) ☒ 8771 ☐ 8773 ☐ Other:Corner:/ ☒ Left as found ☐ Established ☐ Rebuilt ☒ Pre-ConstructionMonument: ☐ Found and tagged ☐ Reestablished ☒ Referenced ☐ Post-Construction

Narrative of corner identified and monument as found, set, reset, replaced, or removed:

☒ See sheet #2 for description(s):

FOUND COUNTY MONUMENT, BRONZE PIN IN MONUMENT WELL AT THE INTERSECTION OF COLBY STREET AND DERMODY AVENUE AS SHOWN ON TRACT MAP 942, BOOK 30 PAGE 44. SET STAINLESS STEEL TAGS AS SHOWN ON PAGE 2.

## SURVEYOR'S STATEMENT

This Corner Record was prepared by me or under my direction in conformance with

the Professional Land Surveyors' Act on August 10, 2019Signed [Signature] P.L.S. or P.C.E. No. 7905

## COUNTY SURVEYOR'S STATEMENT

AUG 07 2019

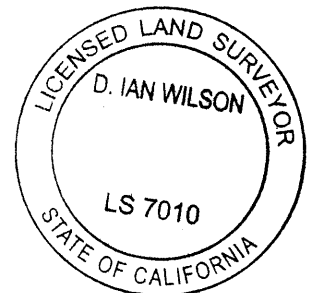
This Corner Record was received

and examined and filed

Signed [Signature] OCT 28 2019 P.L.S. or P.C.E. No. 7010Title County Surveyor

County Surveyor's Comment

SPEC 2380



APN:  
80D-563-10

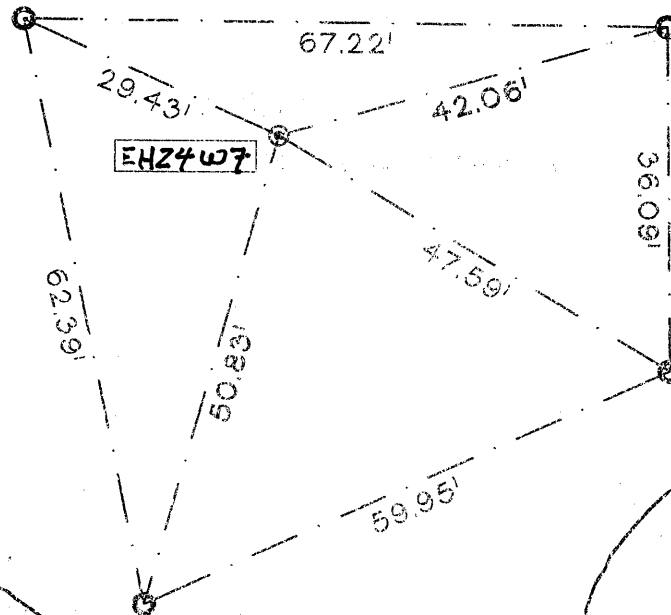


SCALE 1" = 20'

REFERENCE:

TRACT 942 - BOOK 30 PAGE 44

COLBY  
STREET



DERMODY  
AVENUE  
(FORMERLY CLARK AVE.)

LEGEND:

FOUND STANDARD ALAMEDA  
COUNTY MONUMENT IN WELL  
SET STAINLESS STEEL  
TAG (L.S. 7905) AND NAIL  
COUNTY MONUMENT No.



AAATAM