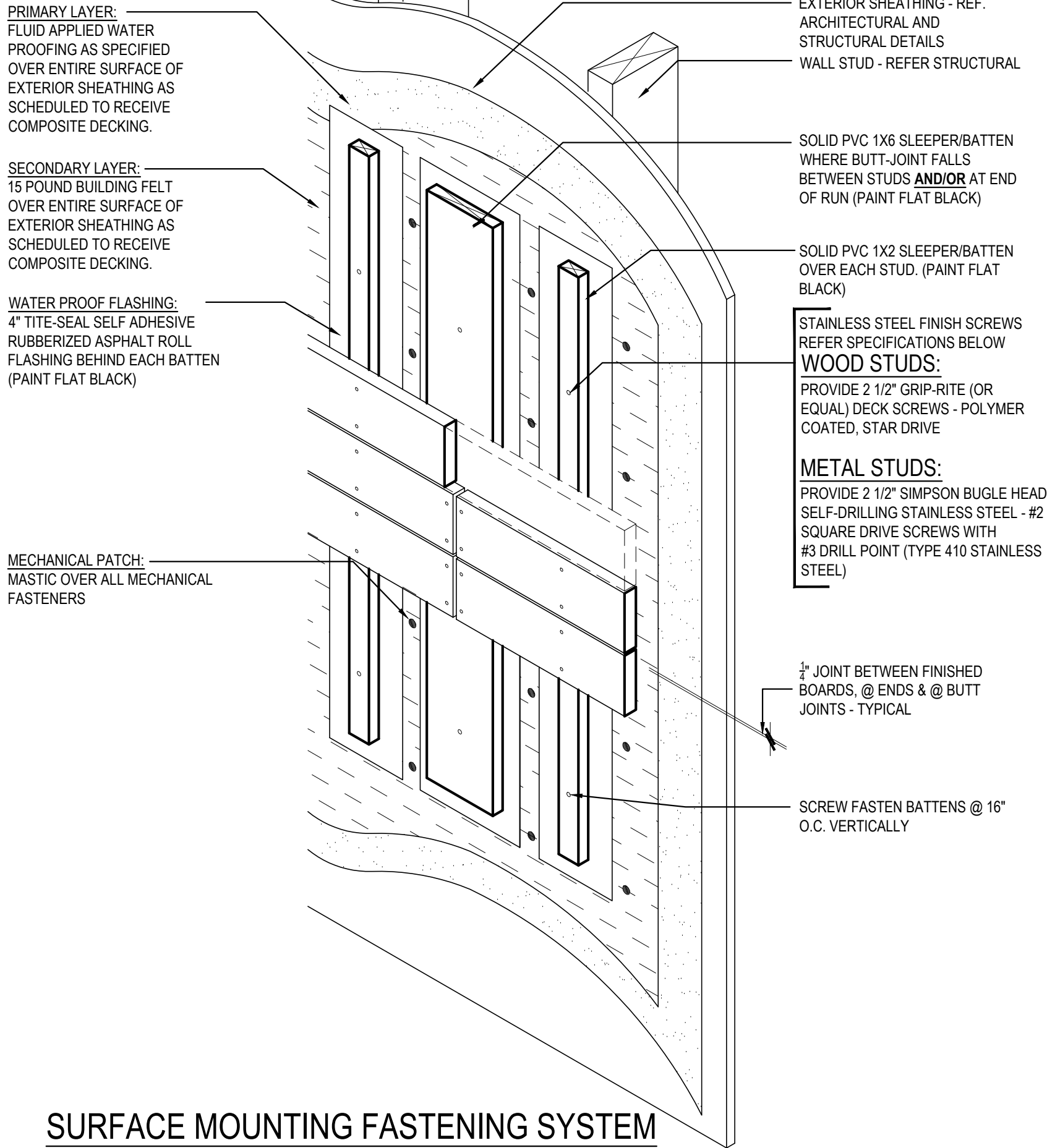


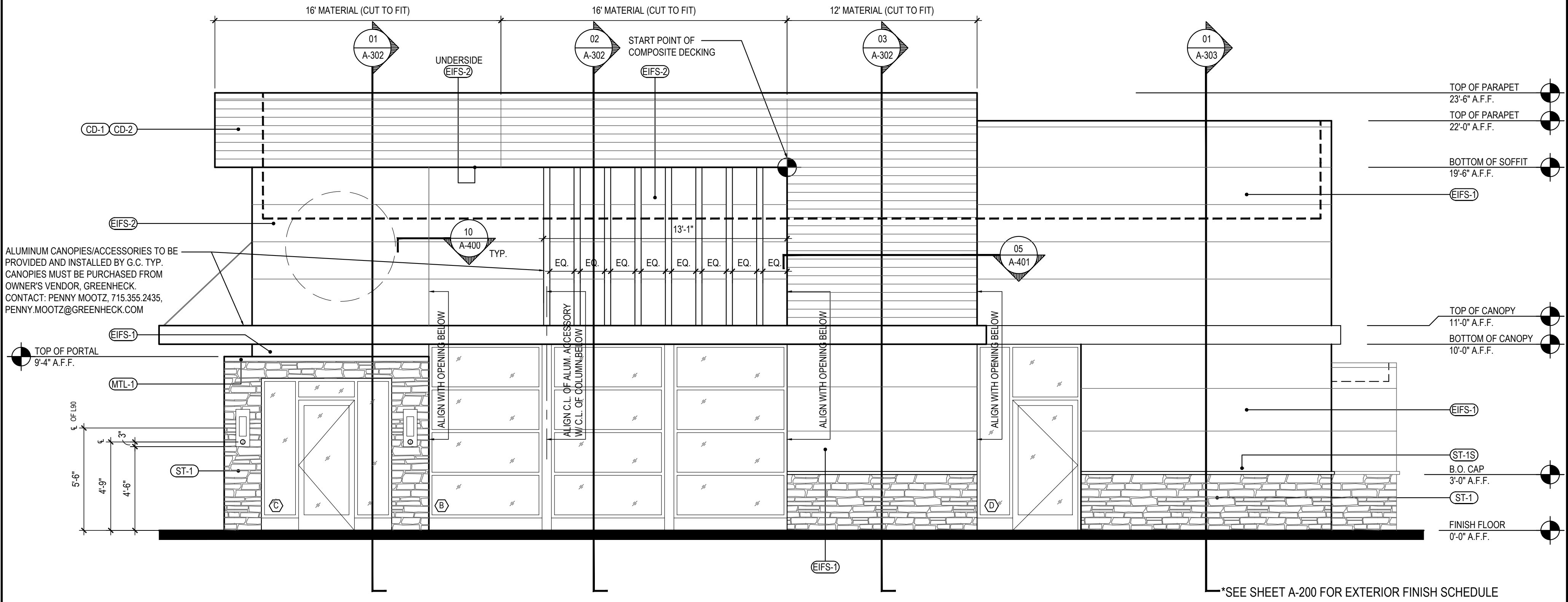
SCREW/FASTENING  
DTL.

WATER/AIR BARRIER



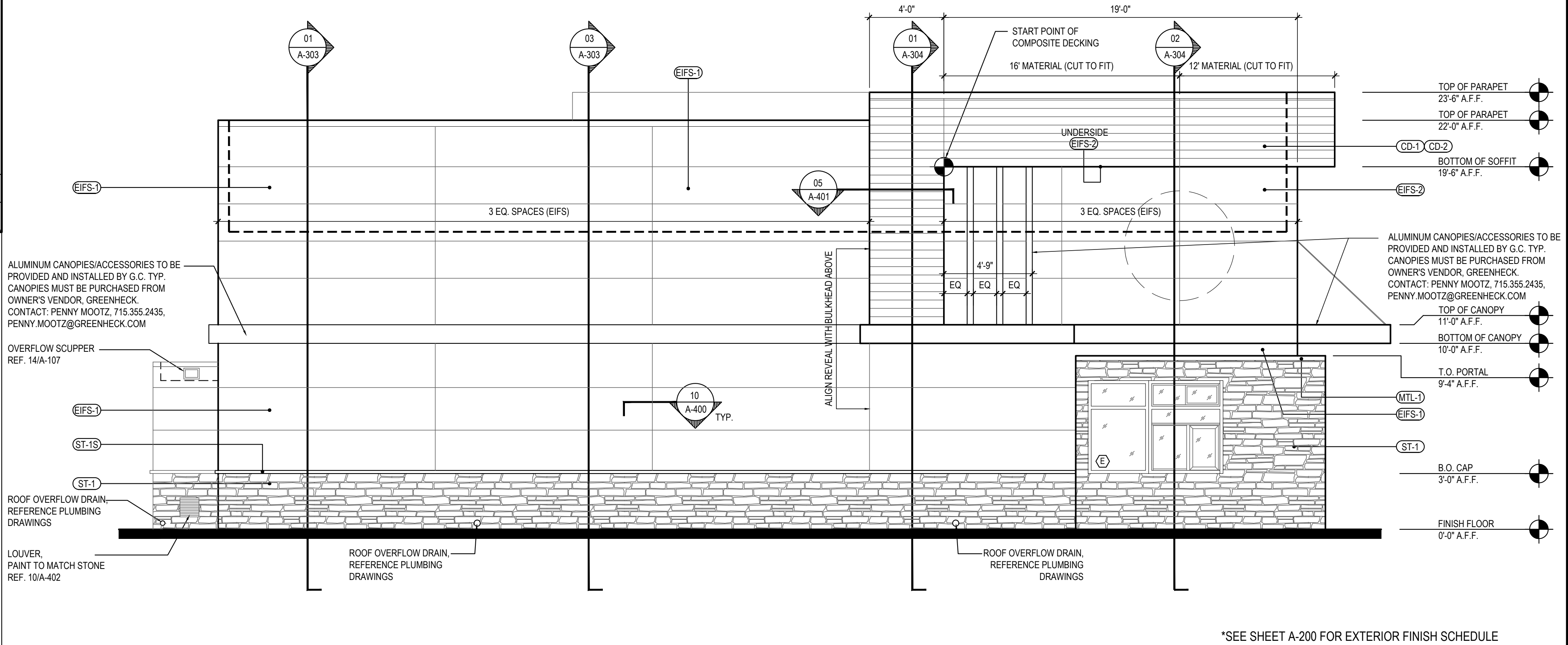
SURFACE MOUNTING FASTENING SYSTEM

COMPOSITE DECK FASTENING & WATER PROOFING DTLs 3  
Scale= 1 1/2" = 1'-0" A-201



SOUTH ELEVATION 2

Scale= 1/4" = 1'-0" A-201



\*SEE SHEET A-200 FOR EXTERIOR FINISH SCHEDULE

NORTH ELEVATION 1

Scale= 1/4" = 1'-0" A-201



PANDA EXPRESS, INC.  
1683 Walnut Grove Ave.  
Rosemead, California  
91770  
Telephone: 626.799.9898  
Facsimile: 626.372.8288

All ideas, designs, arrangement and plans indicated or represented by this drawing are the property of Panda Express Inc. and were created for use on this specific project. None of these ideas, designs, arrangements or plans may be used by or disclosed to any person, firm, or corporation without the written permission of Panda Express Inc.

REVISIONS:

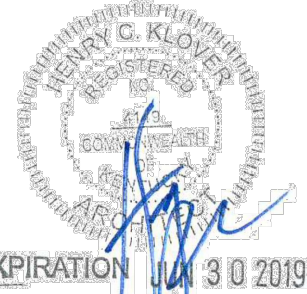
1st	PERMIT SET	10-5-18
2nd	BID SET	11-20-18

ISSUE DATE:

1st	PERMIT SET	10-5-18
2nd	BID SET	11-20-18

DRAWN BY:

PANDA PROJECT #: S8-19-D6462  
ARCH PROJECT #: 18044.013



**Kickloverarchitect**  
10955 LOWELL AVENUE, SUITE 700  
OVERLAND PARK, KS 66210  
ph: 913.649.8181 • fx: 913.649.1275

PANDA EXPRESS

TRUE WARM & WELCOME 2200  
Conestoga Pkwy & Historical Trail  
Shepherdsville, KY, 40165

A-201

EXTERIOR  
ELEVATIONS

TRUE WARM & WELCOME 2200

BID SET 11.20.18