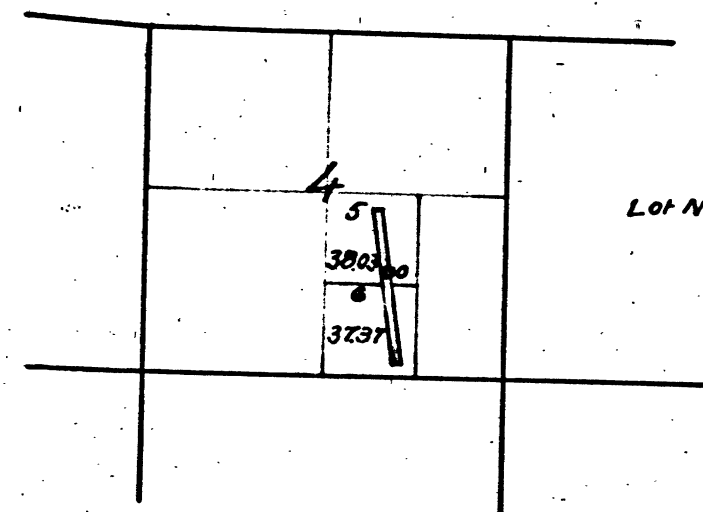


Township No 6 North Range No 13 East Mount Diablo Meridian.

W.L.J.  
1884

T. 6 N. R. 13 E. M. D. M.

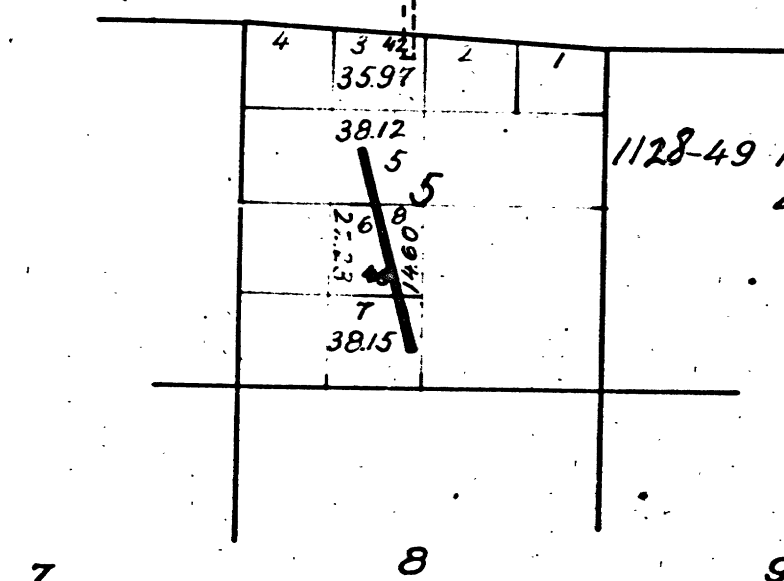


Lot No 60 Champion Quartz Mine

The above diagram showing amendments to Section 4, Township 6 North, Range 13 East, Mount Diablo Meridian is correctly copied from the original map as amended and on file in this office.  
U.S. Surveyor General's Office,  
San Francisco, California.  
May 26<sup>th</sup> 1884.

W. H. Brown  
U.S. Surv. Gen. Col.

Sec. 5 T. 6 N. R. 13 E. M. D. M.

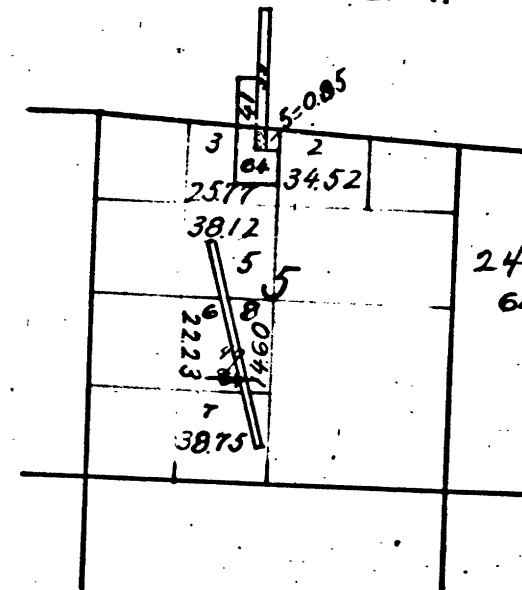


1128-49 Auction Quartz Mine. V76-11

The above diagram of Section 5 Township 6 North, Range 13 East Mount Diablo Meridian, is correctly copied from the Original Map as amended and on file in this Office,  
U. S. Surveyor General's Office,  
San Francisco California.  
July 22<sup>nd</sup> 1880

Thos. Wagner  
U.S. Surv. Gen. Colo.

T. 6 N. R. 13 E. M. D. M.



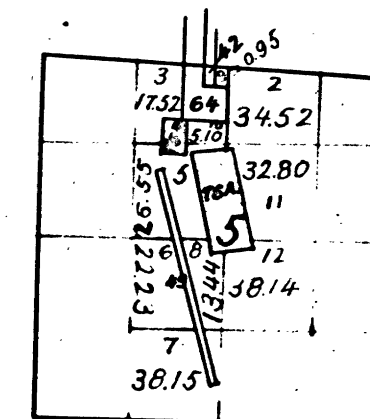
2469-  
64. Reed & Millary Extension Quartz Mine

The above diagram showing amendments to Section 5, Township 6 North, Range 13 East Mount Diablo Meridian is correctly copied from the original map as amended and on file in this Office.

U. S. Surveyor General's Office  
San Francisco California.  
August 18<sup>th</sup> 1886.

D. C. Hammond Jr.  
U. S. Surv. Gen. Col.

T. 6 N. R. 13 E. M. D. M.



T6A. Riverside Quartz Mine  
T6B. Riverside Mill Site. V77-11

The above diagram of Section 5 Township 6 North, Range 13 East Mount Diablo Meridian is correctly copied from the original map as amended and on file in this Office.

U. S. Surveyor General's Office,  
San Francisco California.  
July 2<sup>nd</sup> 1891.

W. H. Ratt  
U. S. Surv. Gen. Col.

DEPARTMENT OF THE INTERIOR,  
GENERAL LAND OFFICE,  
Washington, D. C. Feb. 5, 1892.  
I hereby certify that this is a true copy  
of the plat of official survey of the lands  
to which it relates, on file in this office.

H. S. Sanford  
Recorder, General Land Office.

41 526

11

T 6 N R 13 E M D

CHAINS

CHAINS

10 20 40 60 80 120

BLM 278